

A topographic map of India in grayscale, showing the Western Ghats as a prominent mountain range. A red dotted horizontal line is drawn across the map, passing through the Western Ghats. A vertical rectangular inset image, tilted slightly, shows a close-up view of the Western Ghats, highlighting the rugged terrain and a road winding through it.

SPLICE: THE ICONIC JOINT

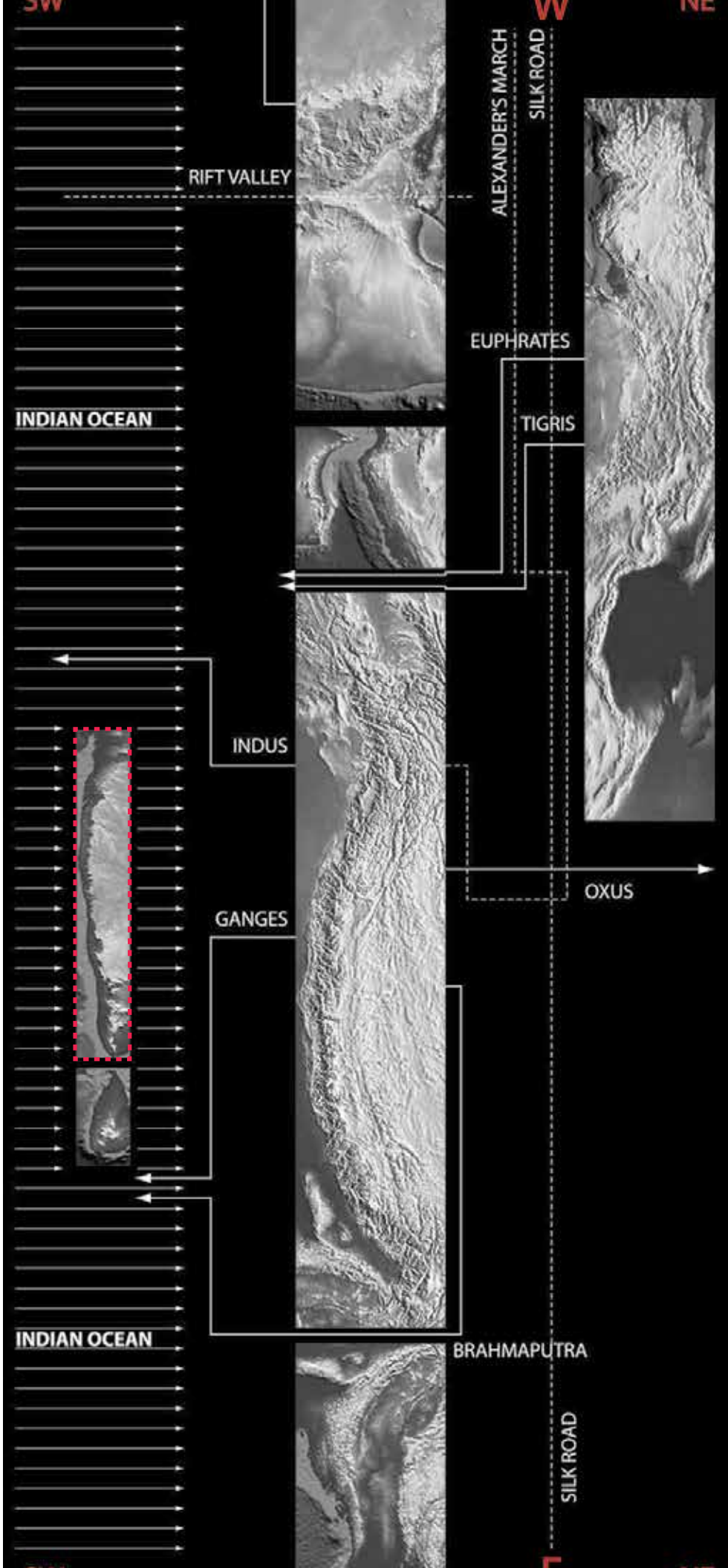
## Imaging and Imagining the Western Ghats

LARP 702\_001 / Spring 2015 / PENNDESIGN

Studio Critic: **Anuradha Mathur**

with DILIP DA CUNHA

Shristi School of Design and Technology, Bangalore



## WESTERN GHATS as splice

a **coast** that calls attention to a land-sea gradient.

**an escarpment** that unites the ground beneath the Arabian Sea and the Deccan Plateau along a N-S shear that reveals layers of basalt toward the north and a surface of laterite to the south.

**a threshold** that allows the SW monsoon to come through, a moisture-laden wind that drops large amounts of rain between June and September on its way to the Himalayas

**a 'wild' belt** that generates networks of roadways, railways and airways to draw people from the urban centers on the Arabian Sea and the Deccan Plateau – people looking for 'nature', vacations, recreation, adventure and research.

**a ground** that reveals veins, strata and ore of coveted minerals.

**a catchment of rain** that inspires conduits of water and hydropower to cities on the Arabian Sea and the Deccan Plateau.

**a biodiversity hotspot** that calls attention to an endangered planet.





**RAINFOREST**



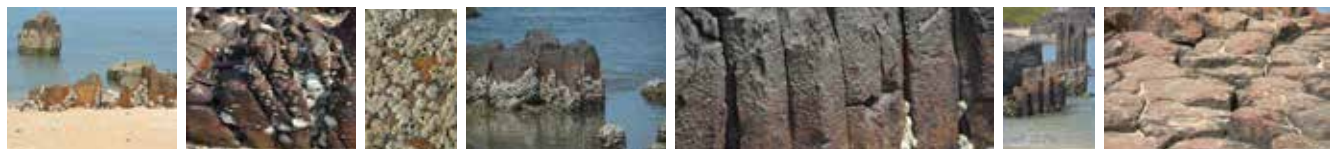
**1.** RAINFOREST, AGUMBE



**2.** TOWN OF UDUPI



**3.** MALPE, FISHING VILLAGE & PORT

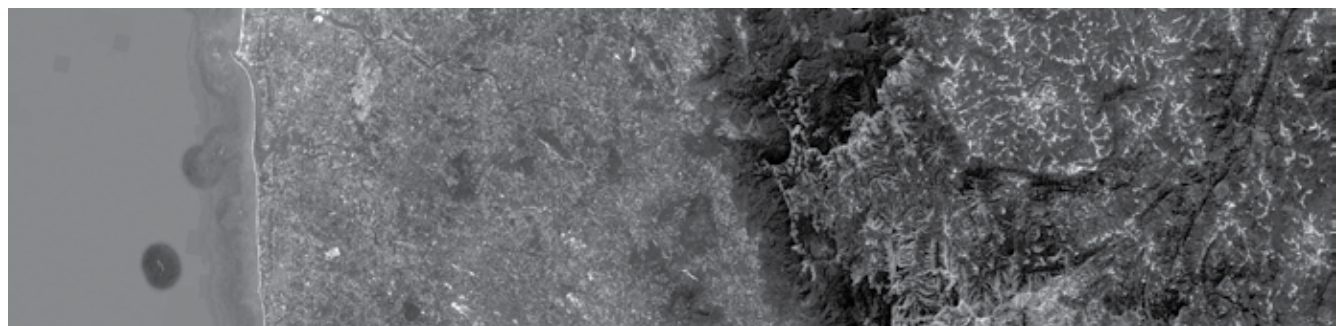
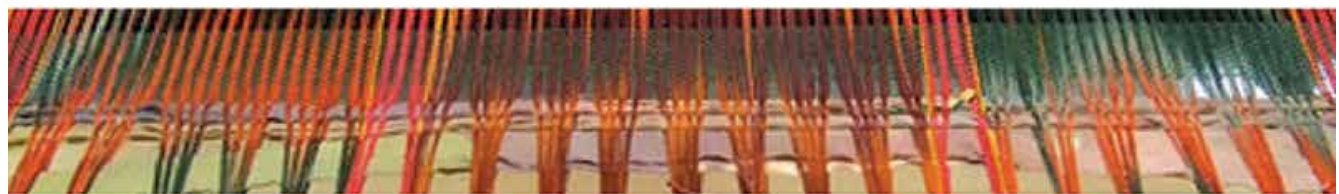
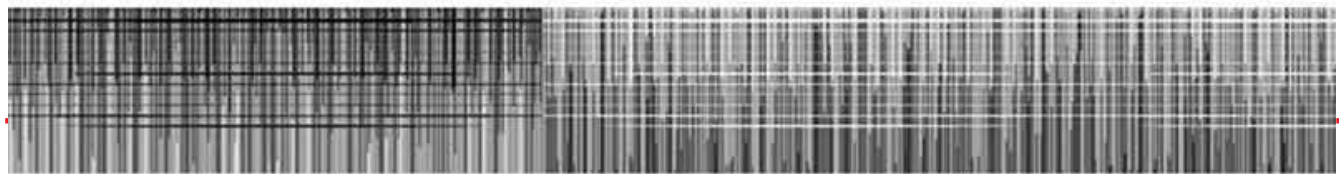
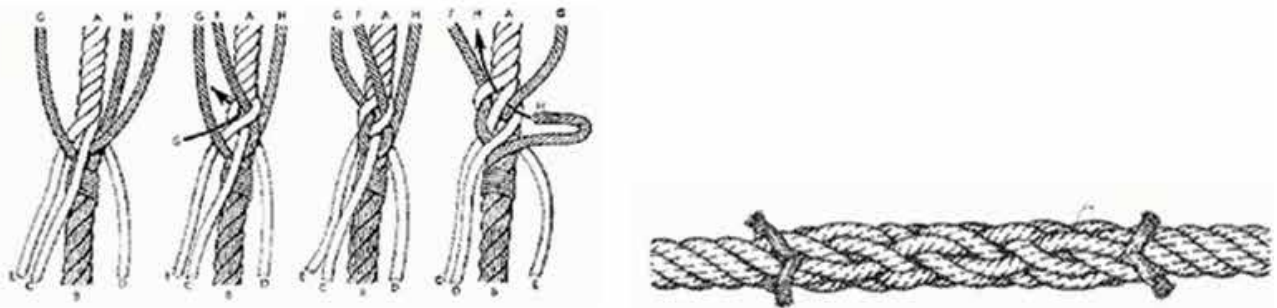
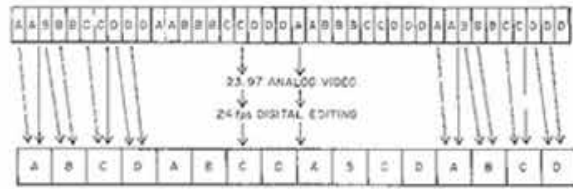


**4.** ST. MARY'S ISLAND

**GHAT CROSSINGS:  
ESCARPMENT TO SEA**

**ARABIAN SEA**





## I. EXPLORATIONS: **Crafting a Splice**

Week 1-3

Investigating Material and Immaterial Joints

wood / paper / print / textile / ....

text / film / map / document / law ...

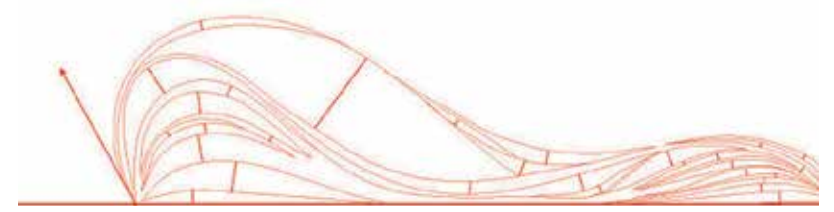
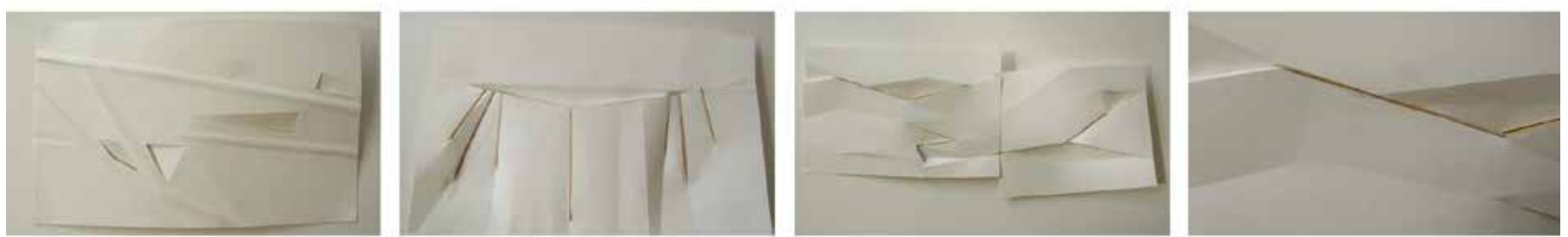
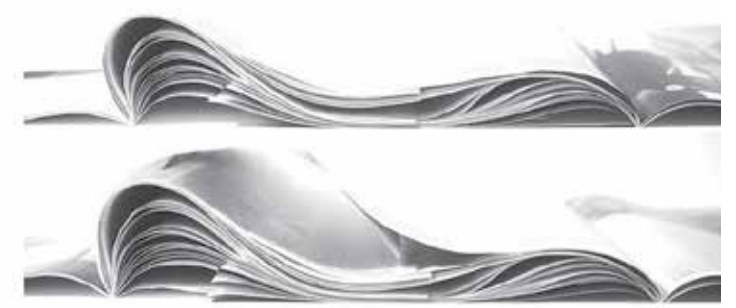
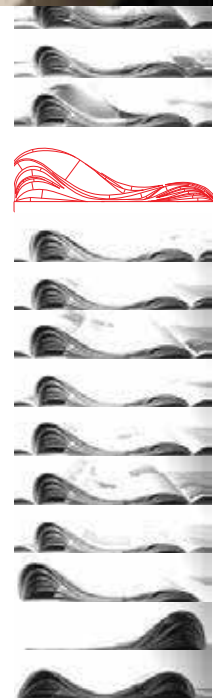
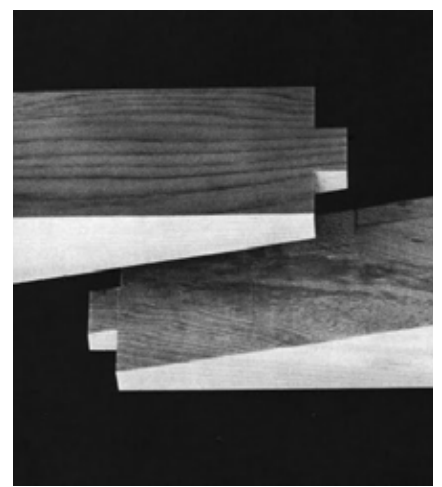
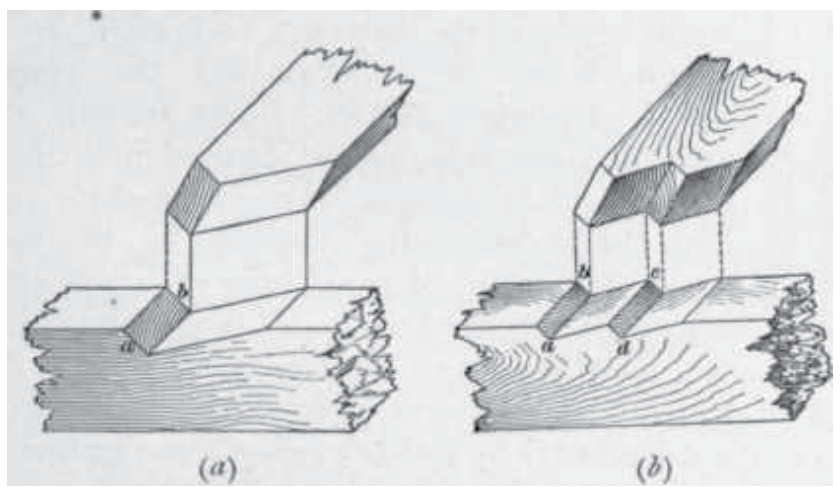
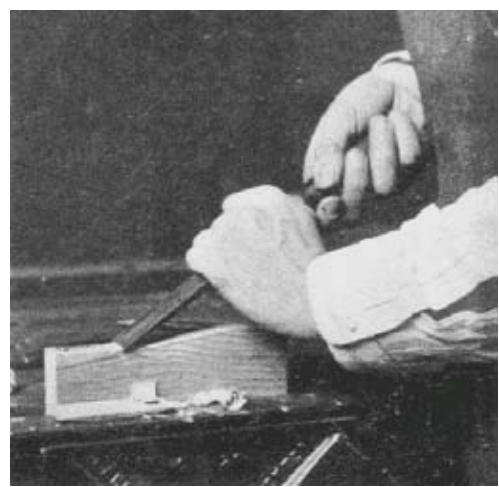
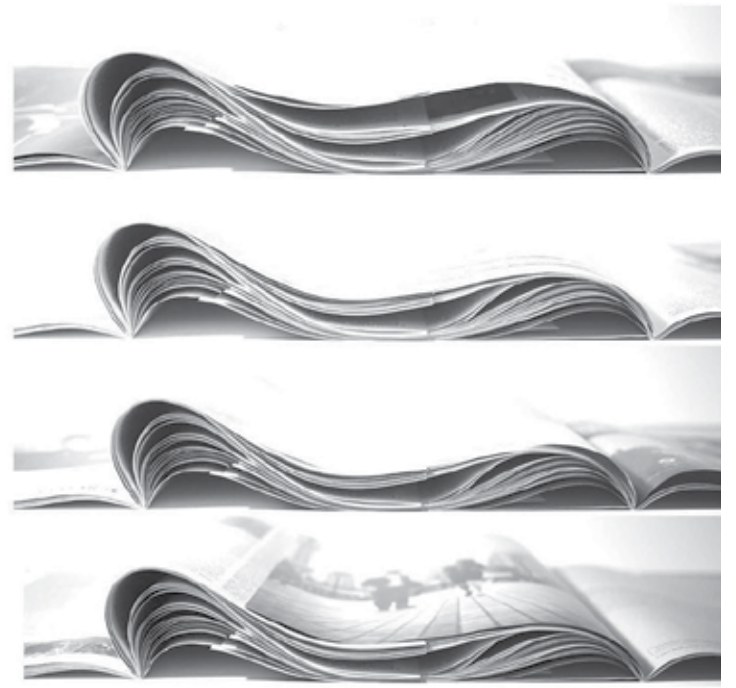
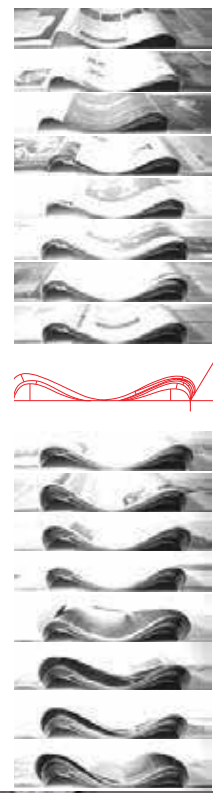
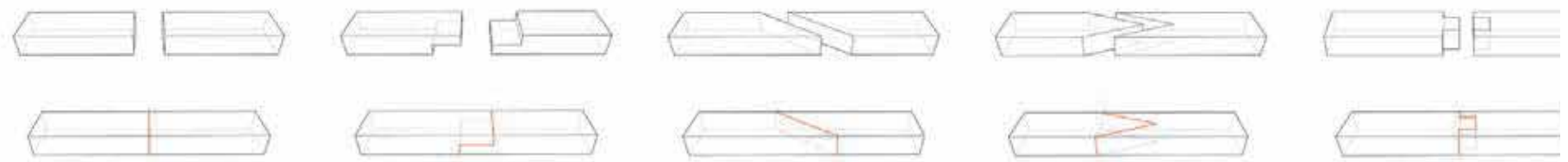
Week 3

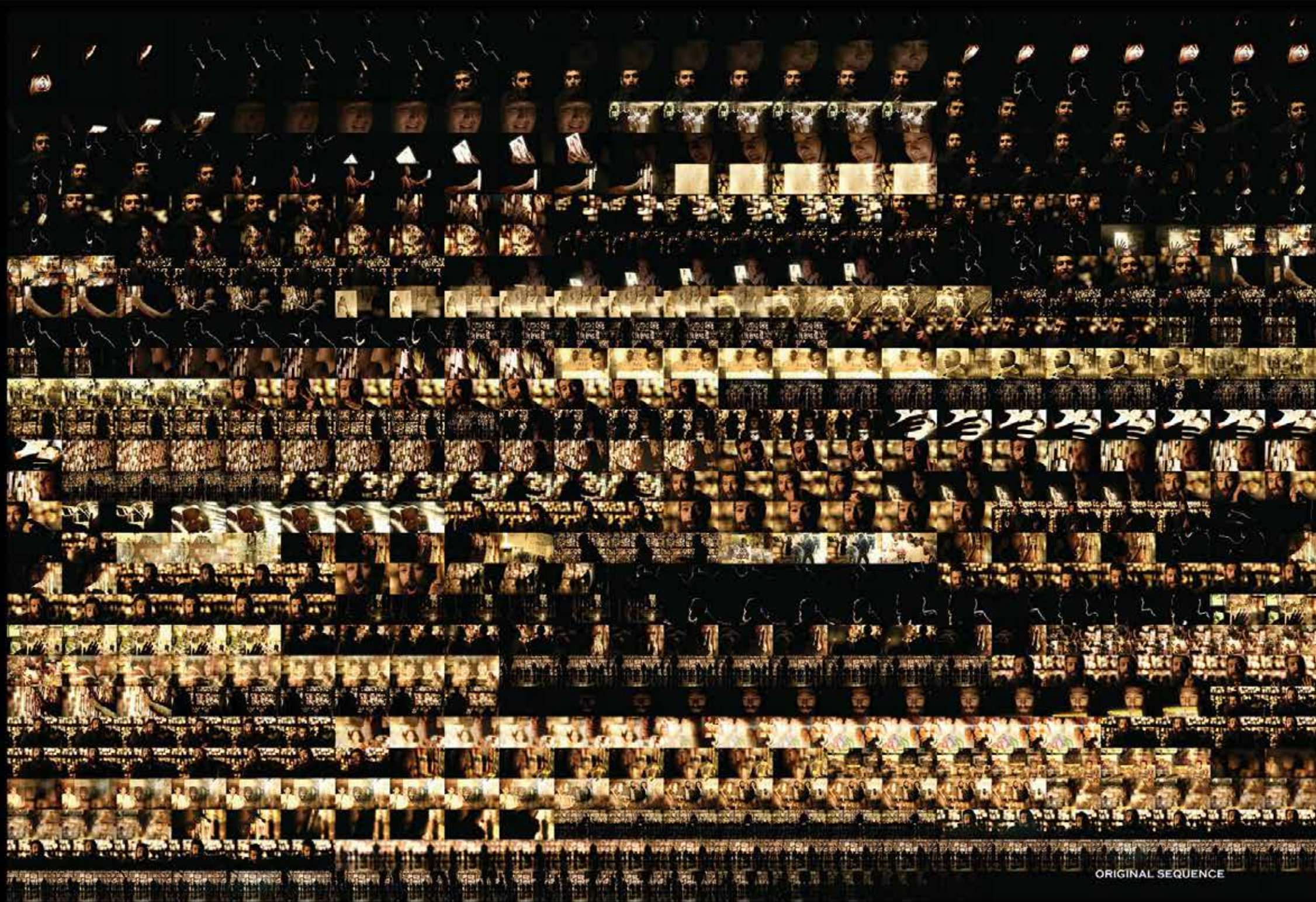
Calling out a Design Language

drawing / plotting / fabricating ....

Week 4

Imaging the Western Ghats





# PURITY RITUALS

SOURCE

RHYTHM



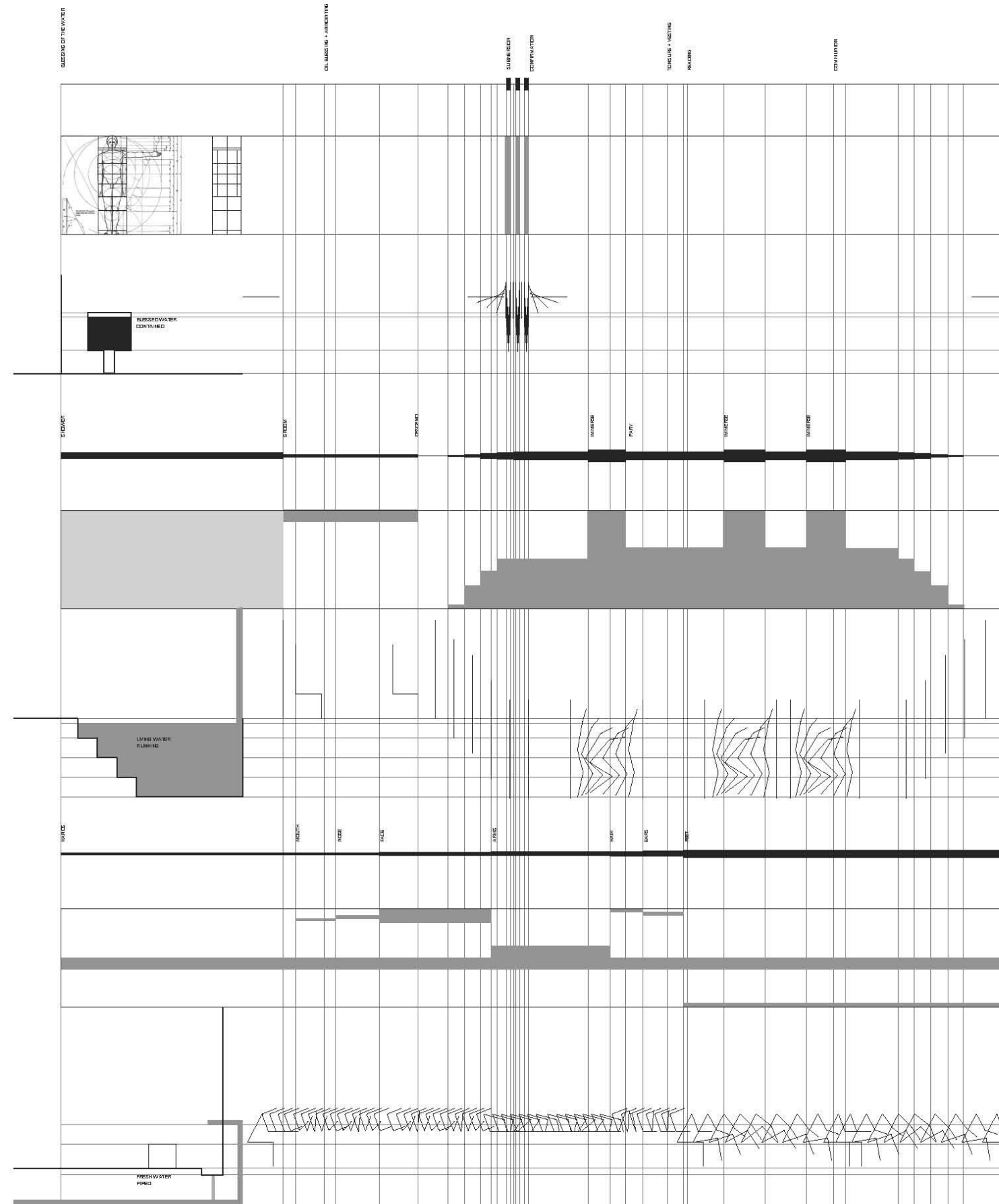
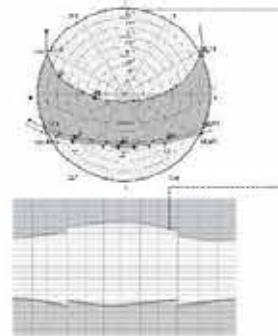
MATTHEW 23:17, MARK 11:17, LUKE 21:10, JOHN 10:32



LEVITICUS 15



ESRA 1:1-4



PERFORMANCE



TO BE PLACED

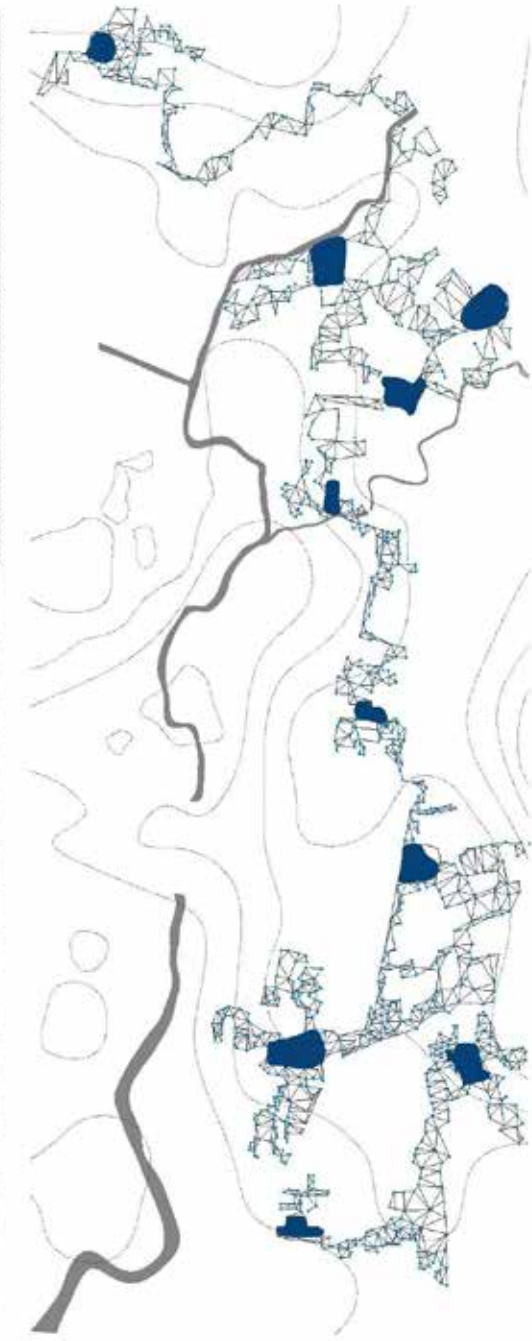
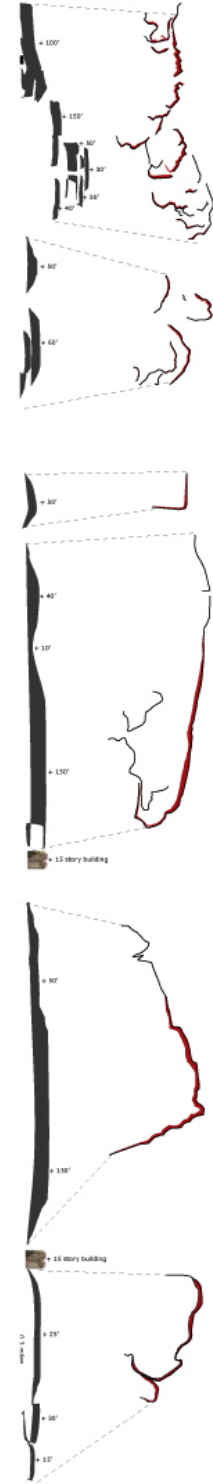
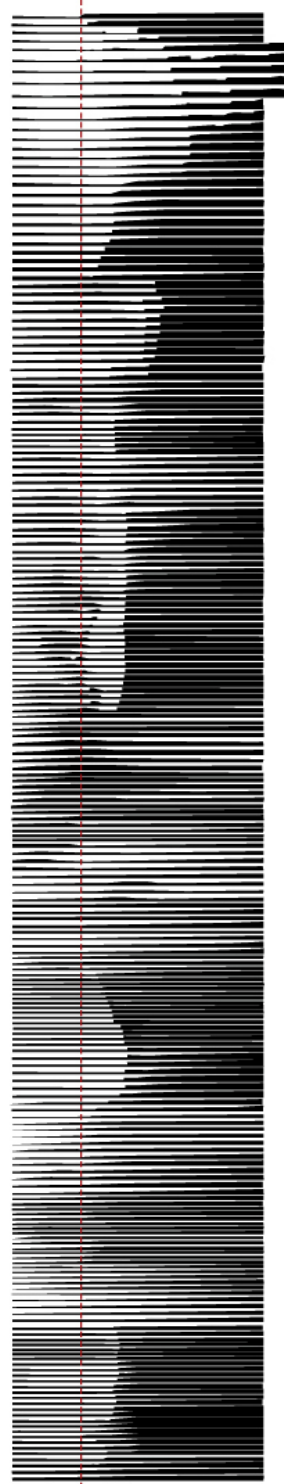
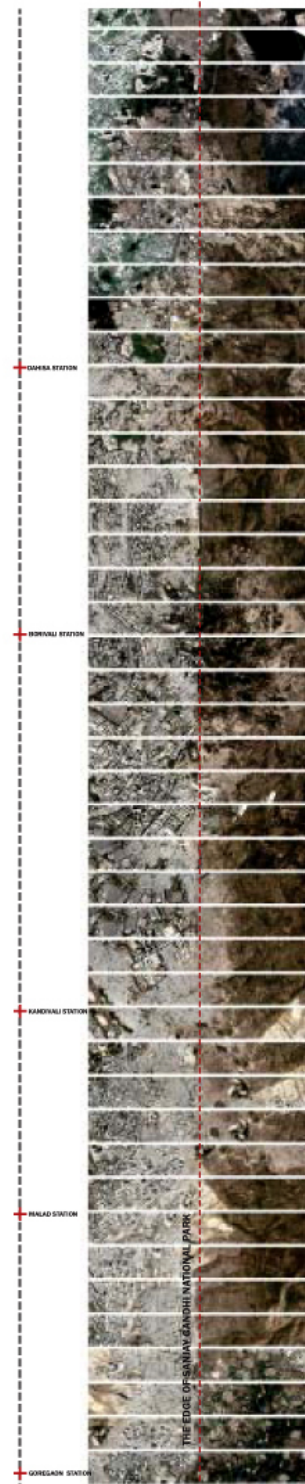


TO BARKEN



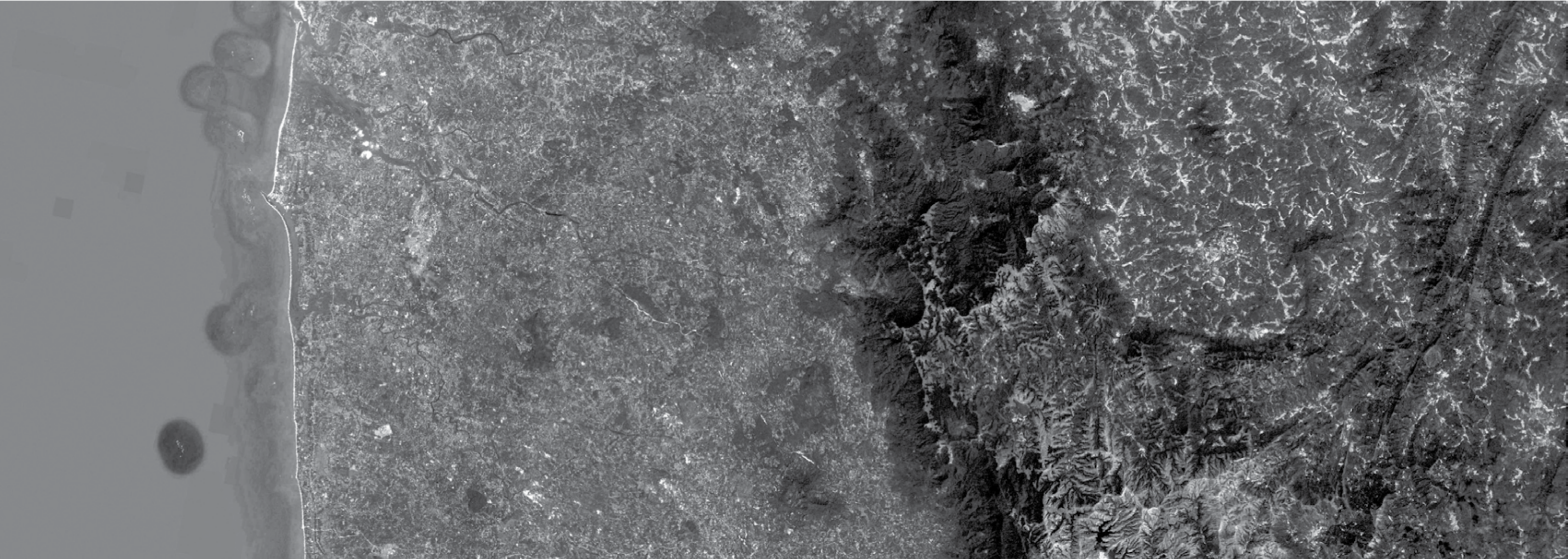
TO WASH

SITE READINGS

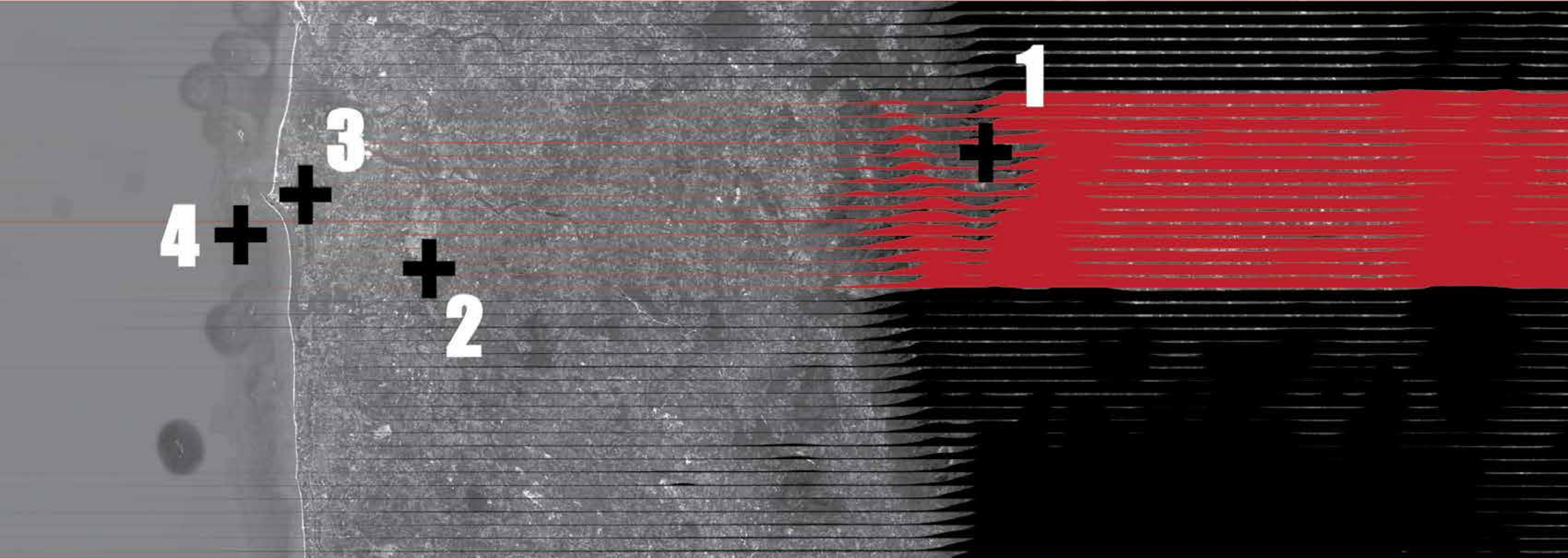




## II. FIELD WORK: Traversing a Splice



## II. FIELD WORK: Traversing a Splice

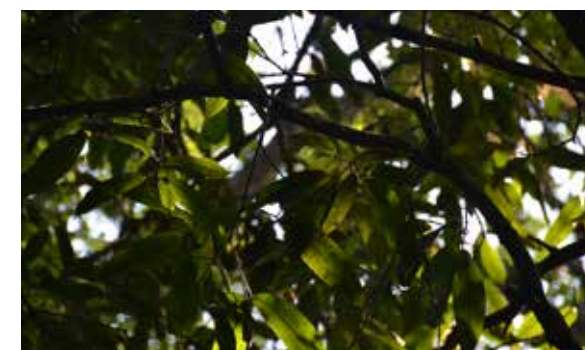


4. ST. MARY'S ISLAND

3. MALPE

2. UDUPI

1. AGUMBE



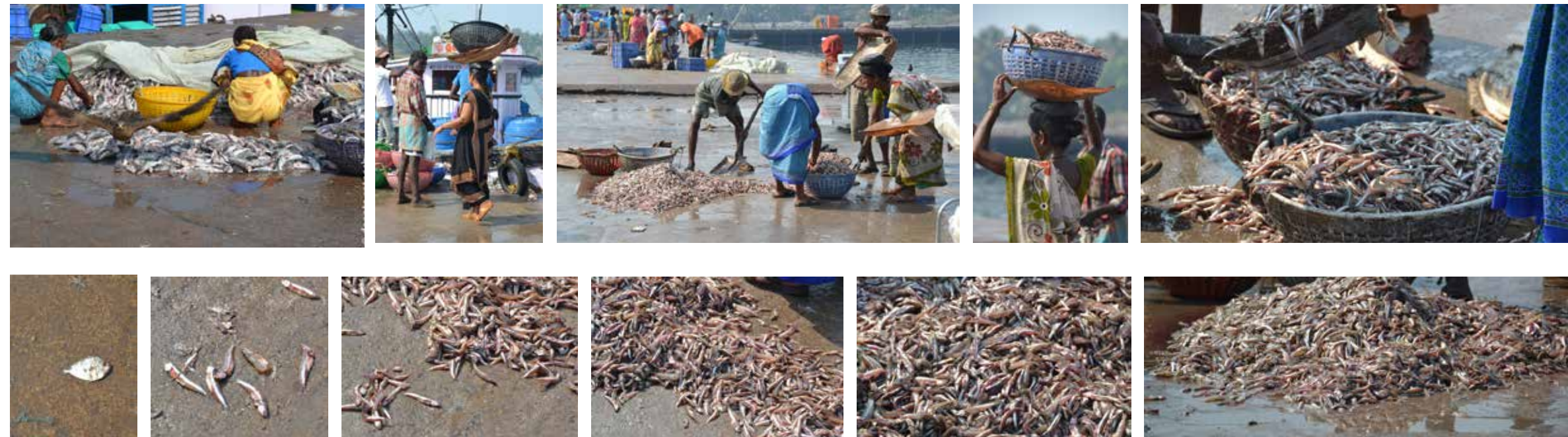
1. **AGUMBE**

name of a quintessential village in the rainforest adjacent to the ARRS (Agumbe Rainforest Research Station) that is known for its conservation efforts and tourism



2. **UDUPI**

a town near the coast known for cuisine and pilgrimage



### 3. MALPE

a natural port and fishing hub on the west coast of India

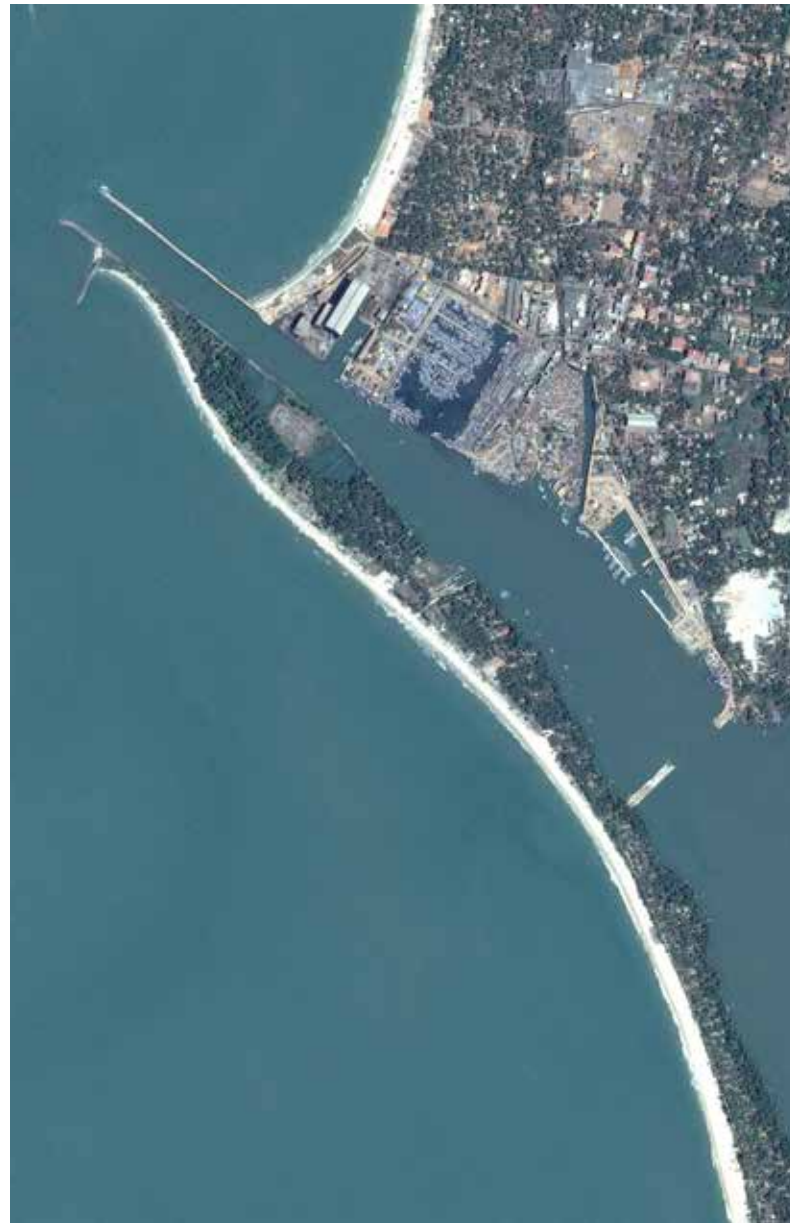


#### 4. **ST. MARY'S ISLAND**

extrusions of basalt that are tourist landmarks for their formation and ecology



4. **ST. MARY'S ISLAND**



3. **MALPE**



2. **UDUPI**



1. **AGUMBE**

### III. INTERVENTION: Designing a Splice





REFAIM VALLEY

And it shall come to pass in that day, that living waters shall go out from Jerusalem, half of them toward the eastern sea and half of them to the western sea [Zechariah XIV, 9]



ANCIENT JERUSALEM

STERILIZED ZONE INTERVENTION



GREEN LINE

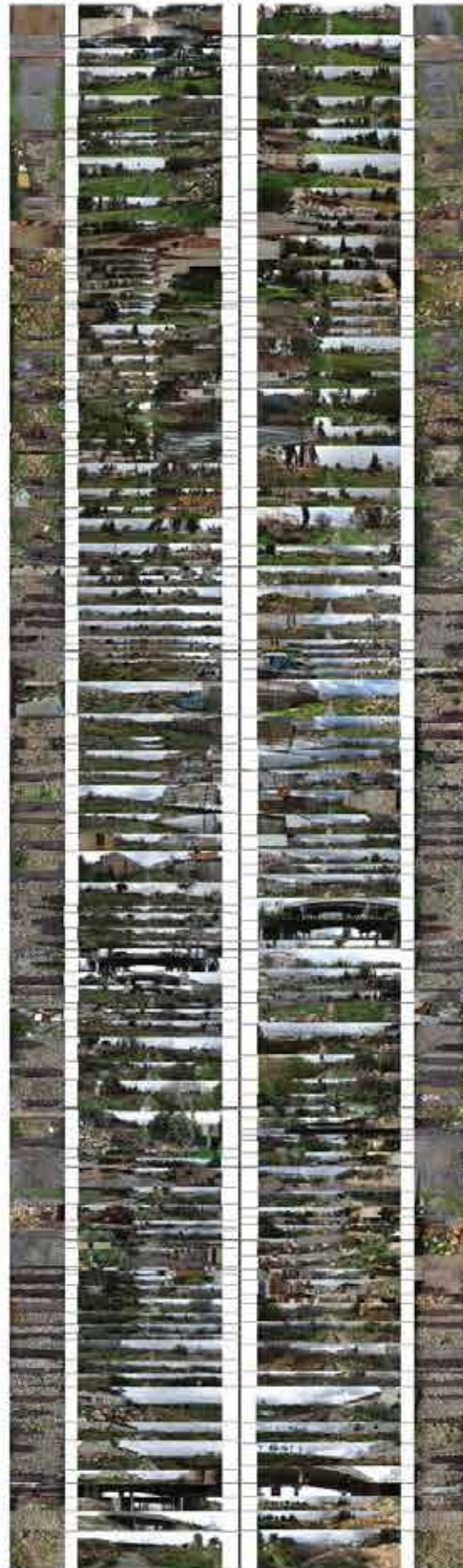
NAHAL REFAIM

BET THEMESH

NAHAL SOREK

SEA

RHYTHMS\_HORIZONS + MATERIALS



ANCHORS + ARTIFACTS

MEKOR CHAIM



checkpoint



fortified synagogue



RAV HEN THEATER (AND MARKET)



BEIT SAFafa MOSQUE + COMMUNITY CENTER



OLIVE GROVES

ENCOUNTER



GONENIM NEIGHBORHOODS

EVENT

THRESHOLD

EXCHANGE



HAND-IN-HAND BILINGUAL SCHOOL

OPERATIONS + AGENDAS

SPLICE  
MULTIPLY CROSSINGS



DIVERT  
THROW OFF AXIS



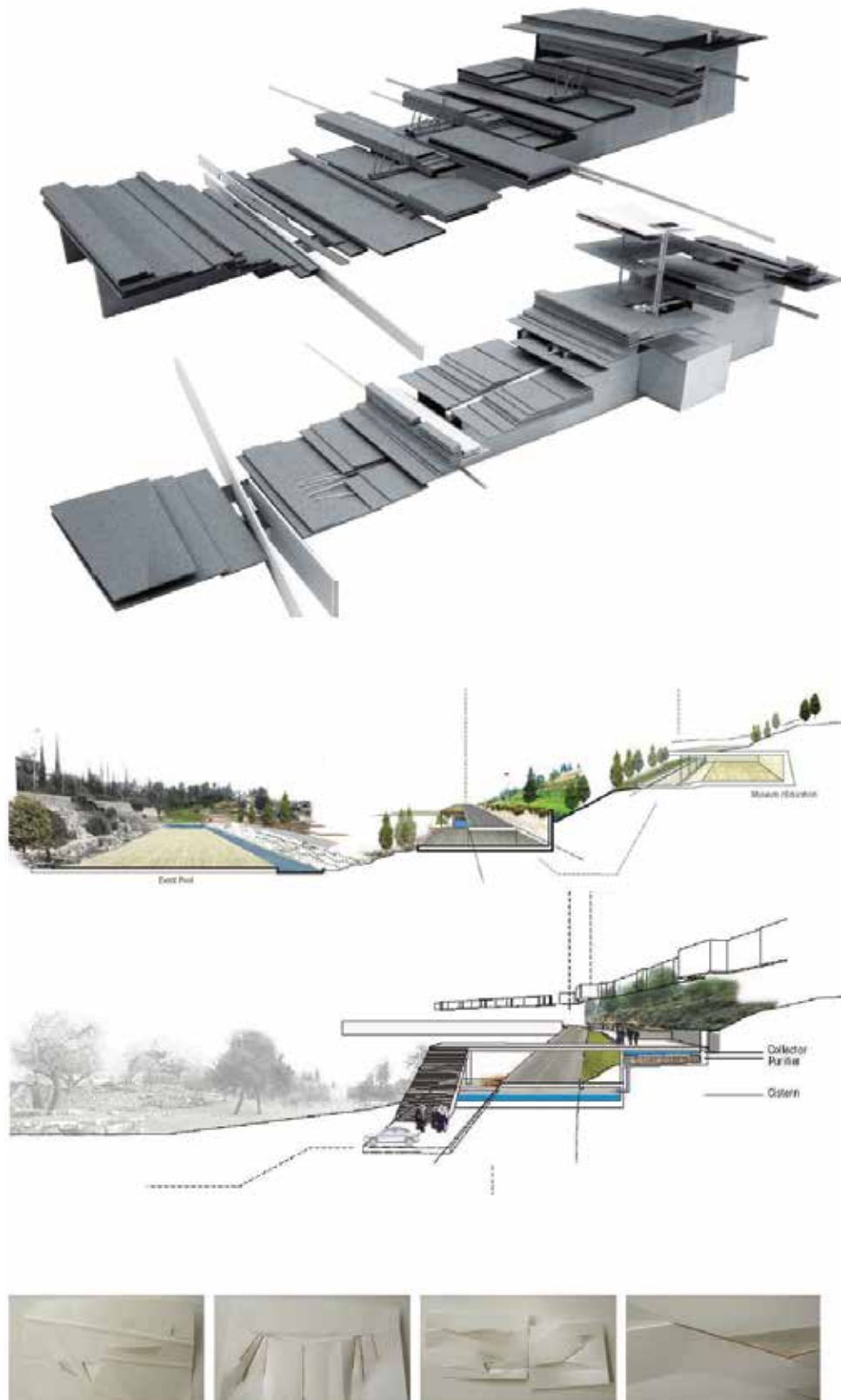
SCREEN  
ENTER SACRED GROUND



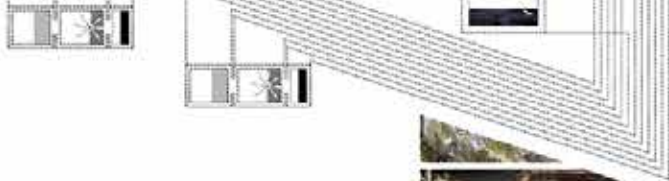
TERRACE  
BREAK FORTIFICATION



### III. INTERVENTION: Designing a Splice



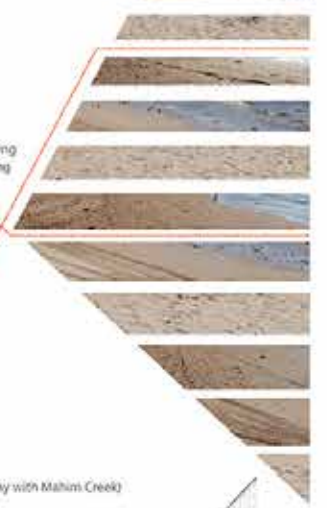
**BARGE**  
toiletting  
collecting  
processing  
cultivating



**OART**  
sheltering  
harvesting  
cultivating  
coconut - Coconut nut fibre



**MAIDAN BEACH**  
gathering  
celebrating  
playing  
entertaining  
vending  
playing  
entertaining  
vending  
boat-beaching  
swimming



**CREEK**  
connecting (Mahim Bay with Mahim Creek)  
launching  
docking  
fishing  
entering / exiting

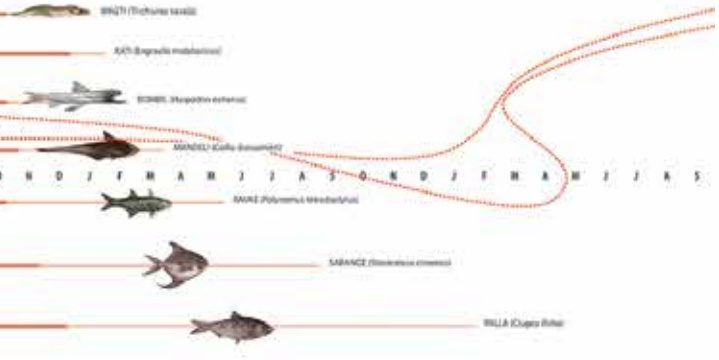
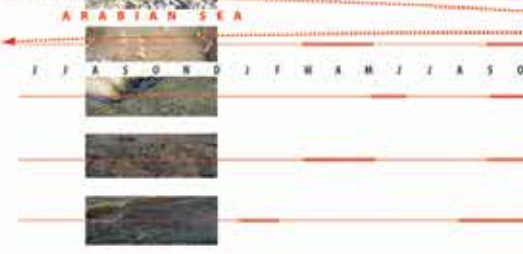
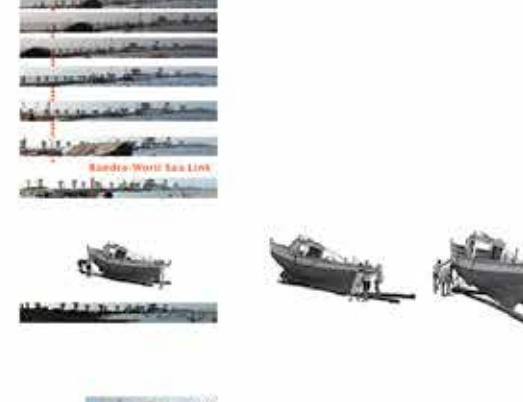


**BAZAAR**  
sorting  
mandali - Cissampelos  
wagli - Trichopus saturei  
bumbli - Harpedon nakturus  
bhijee - Clupea longirostris  
bhing - Clupea tol  
katati - Sparoteleoides auribaccus  
pochi - Clupea finlayi  
saranga - Bromarzus crenatus  
darmal - Cybium gaudichoti



**BAZAAR MAIDAN**  
displaying  
vending  
bargaining  
gathering  
collaborating  
playing  
fish drying  
net mending  
weed farming

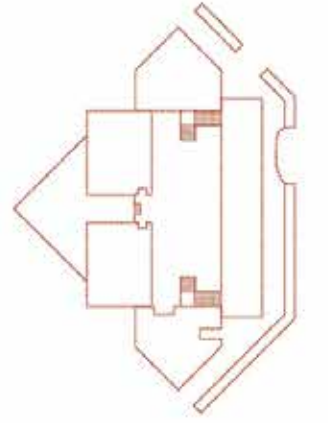
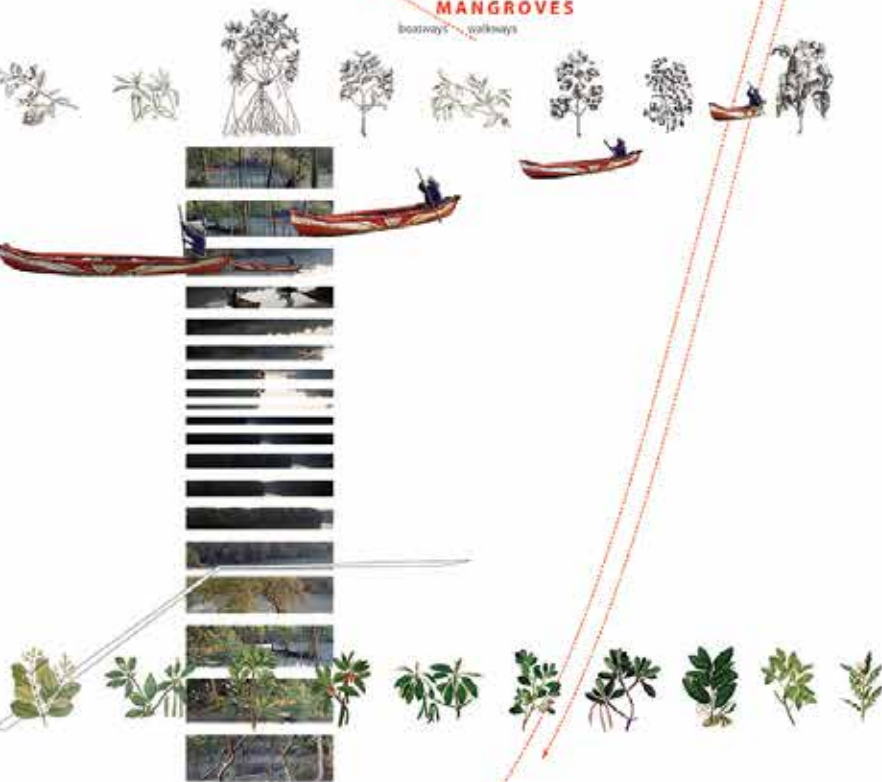
**BARGE DEPOT**  
(floating gardens beneath Bandra-Worli Sea Link)  
aquaculture processing  
harvesting (seeds, mature plants)  
remediating (soil, water)  
cultivating  
walking  
learning  
recycling  
enjoying (sitting, sunbat, sunset)



**BIRDWATCH PROS**  
sighting  
visiting  
member house  
nests/roosts  
gathering



**MANGROVES**  
boatways  
walkways



A grayscale topographic map of India is the background. A horizontal red dotted line runs across the middle. A vertical rectangular inset image, tilted slightly, shows a close-up of a mountain range, likely the Western Ghats, with a road or path visible. The text is overlaid on the left side of the map.

SPLICE: THE ICONIC JOINT

Imaging and Imagining the Western Ghats

LARP 702\_001 / Spring 2015 / PENNDESIGN

Studio Critic: **Anuradha Mathur**

with DILIP DA CUNHA

Shristi School of Design and Technology, Bangalore