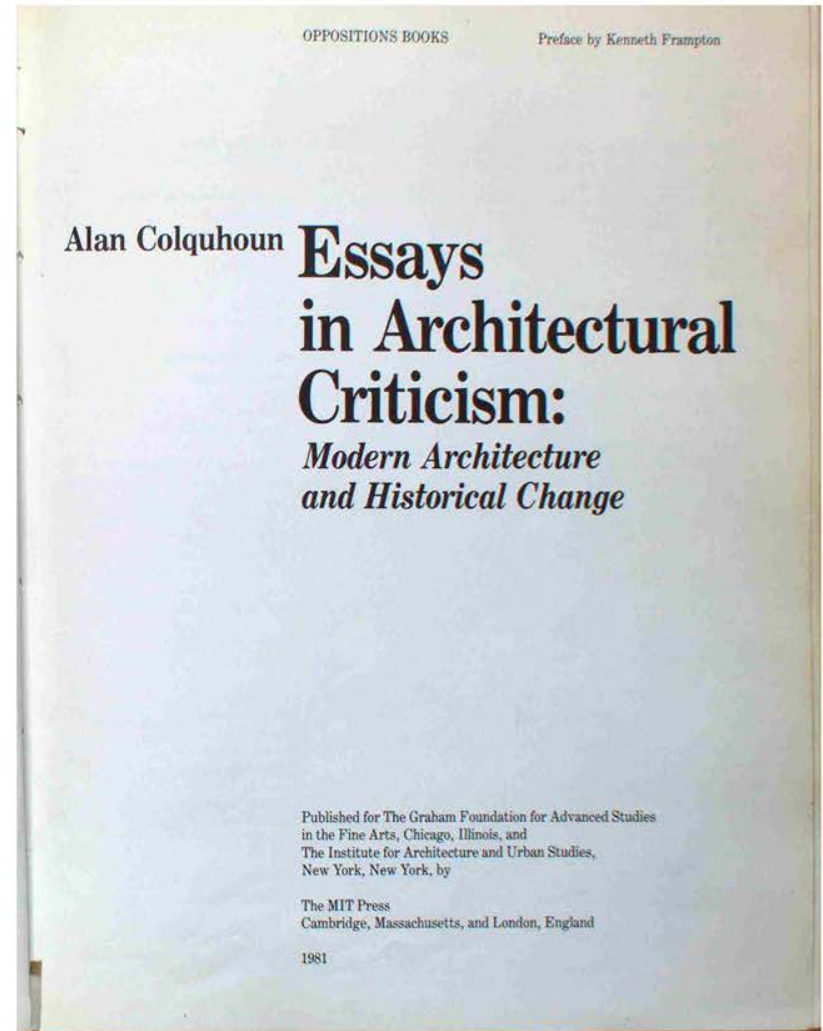
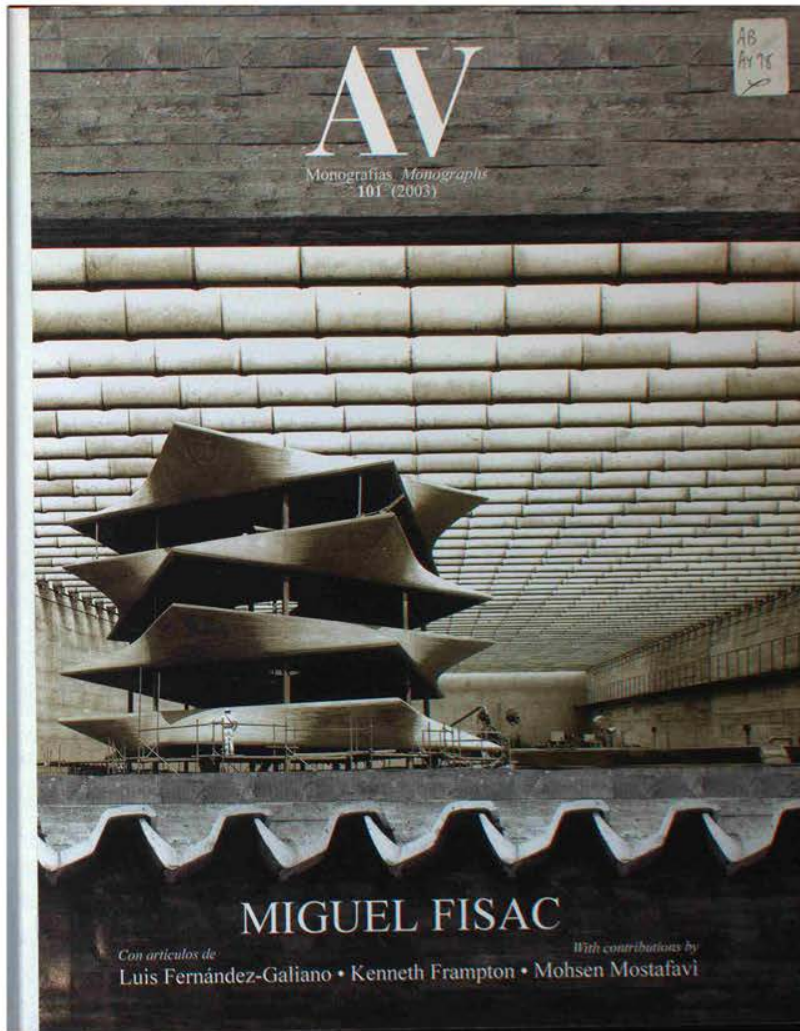


*THE SUPER BLOCK:
MIGUEL FISAC - ALAN COLQUHOUN*

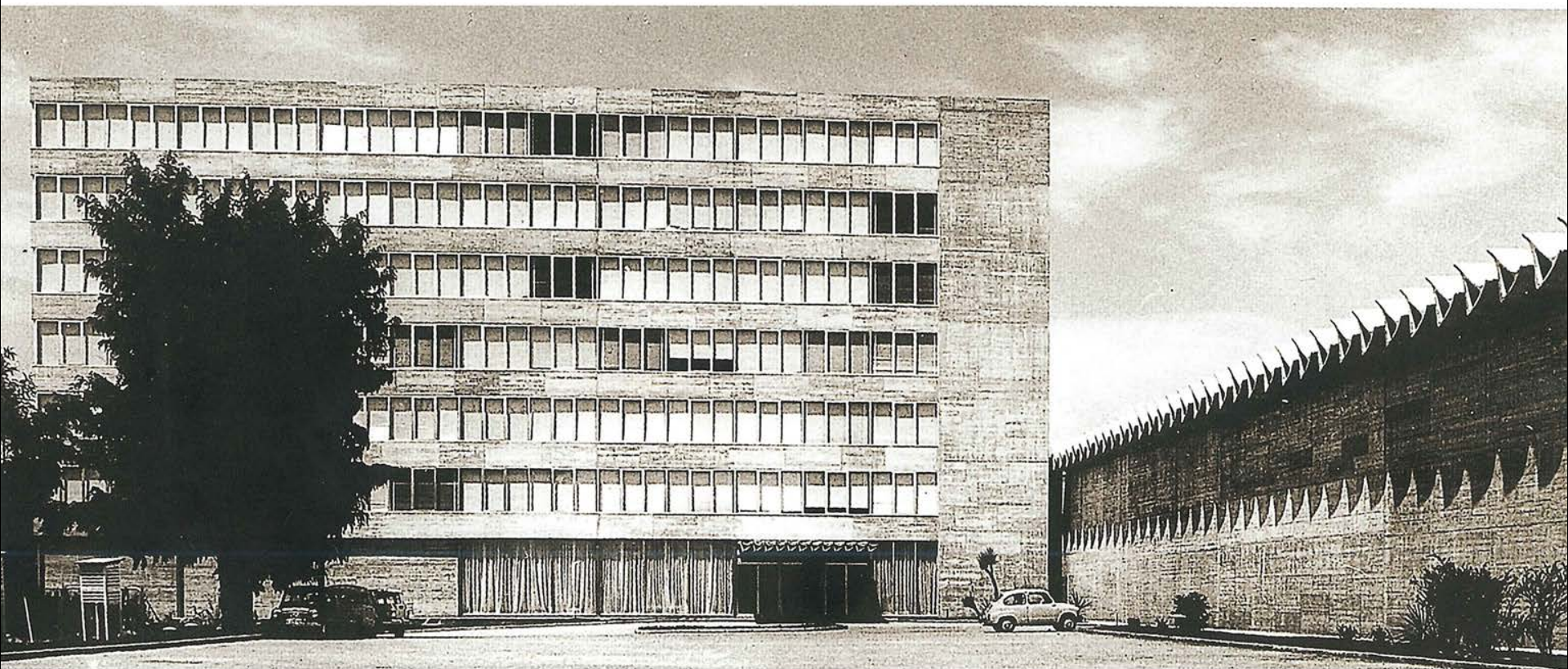
OPTION STUDIO 704-202

PROF. HOMA FARJADI & CHARLES CURRAN





MIGUEL FISAC SURROUNDED BY PRE-FABRICATED VOUSOIRS, 1962



CENTER FOR HYDROGRAPHIC STUDIES, 1963, MADRID



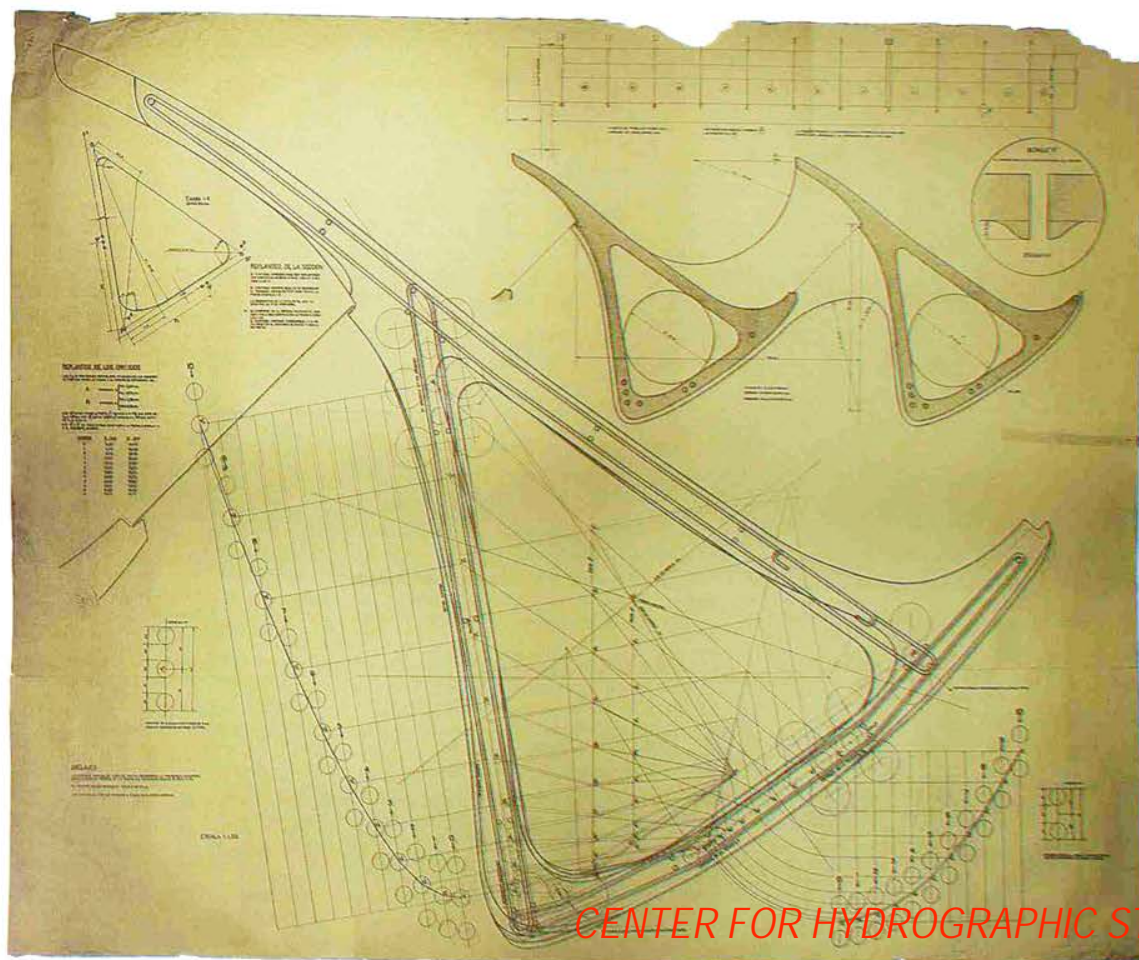
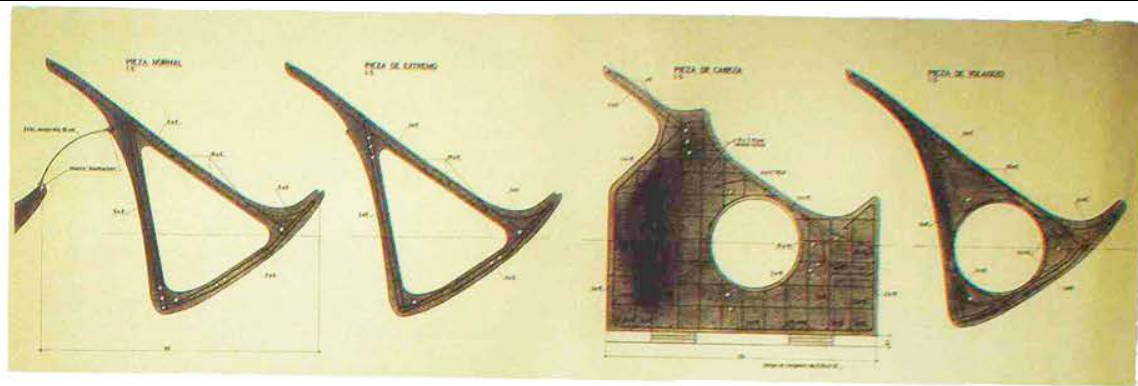
CENTER FOR HYDROGRAPHIC STUDIES, 1963, MADRID

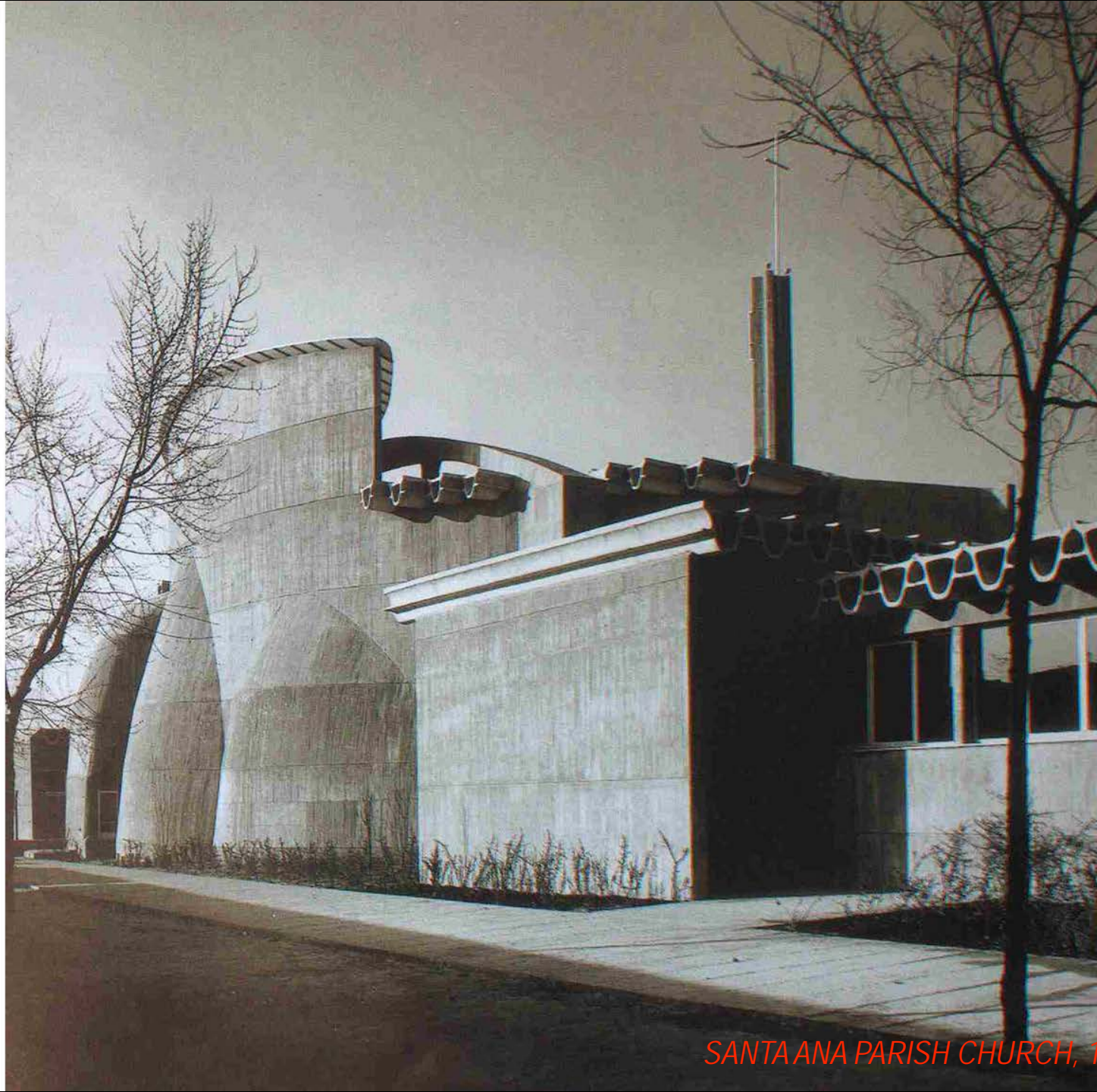


CENTER FOR HYDROGRAPHIC STUDIES, 1963, MADRID

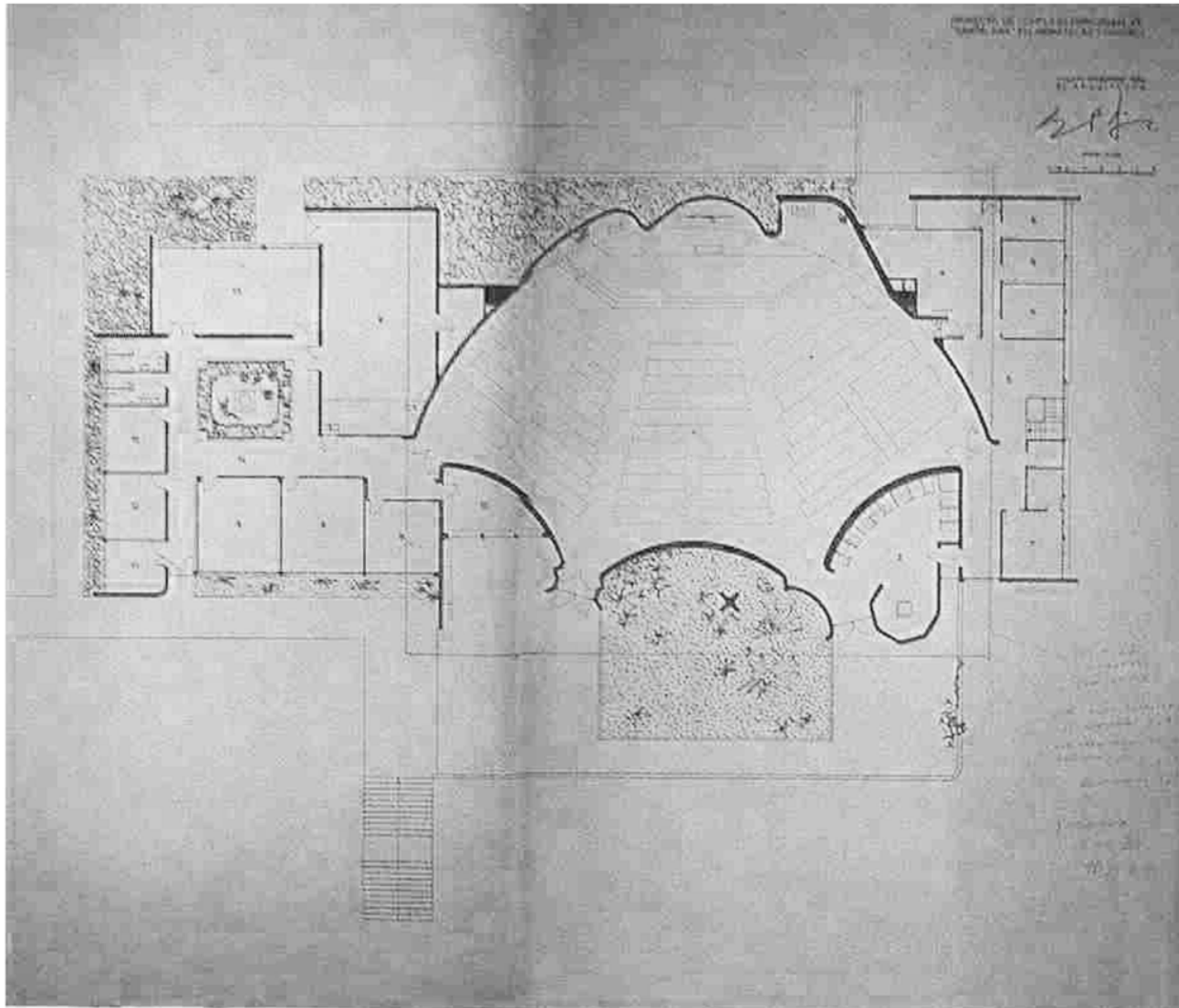


CENTER FOR HYDROGRAPHIC STUDIES, 1963, MADRID

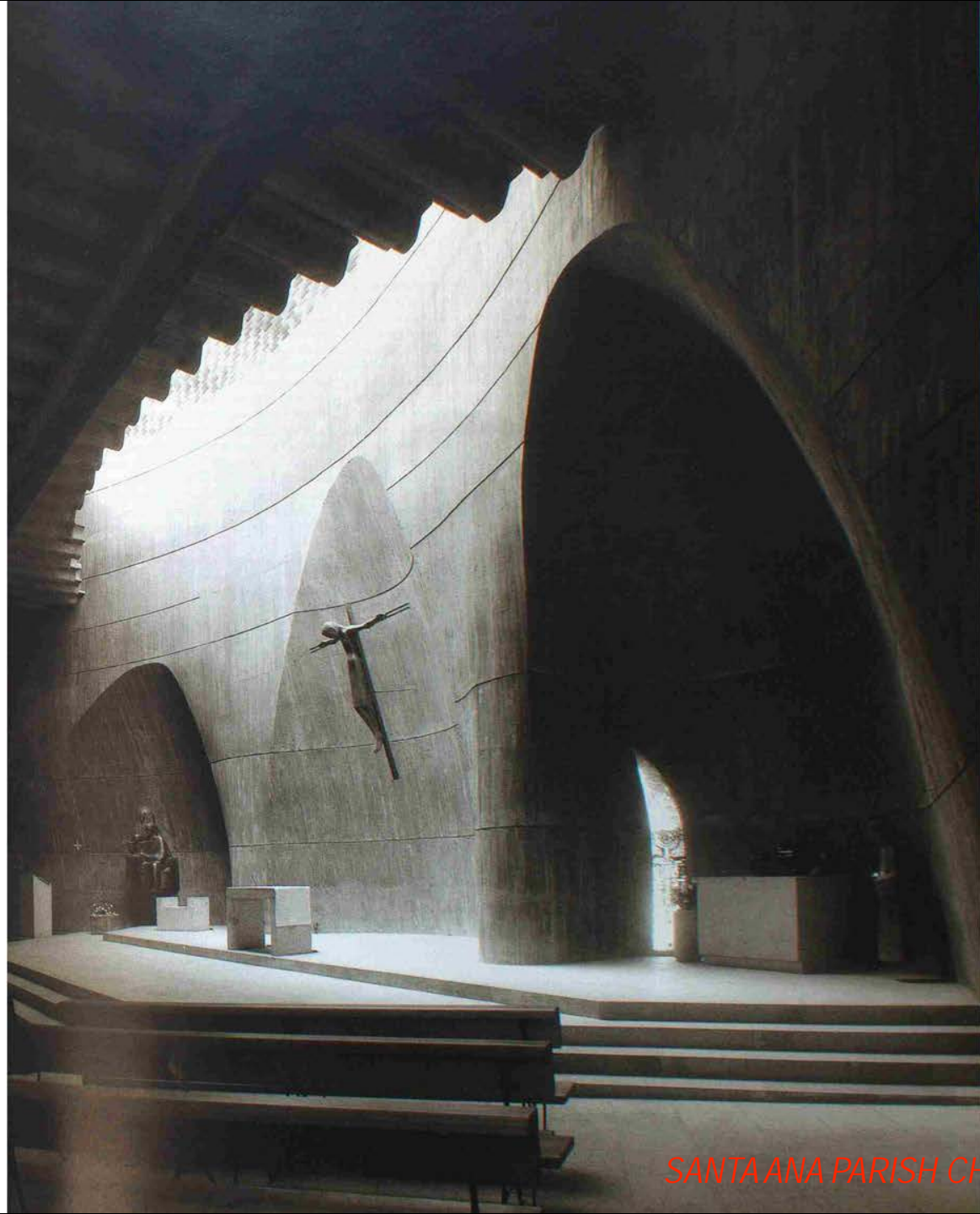




SANTA ANA PARISH CHURCH, 1971, MADRID



SANTA ANA PARISH CHURCH, 1971, MADRID



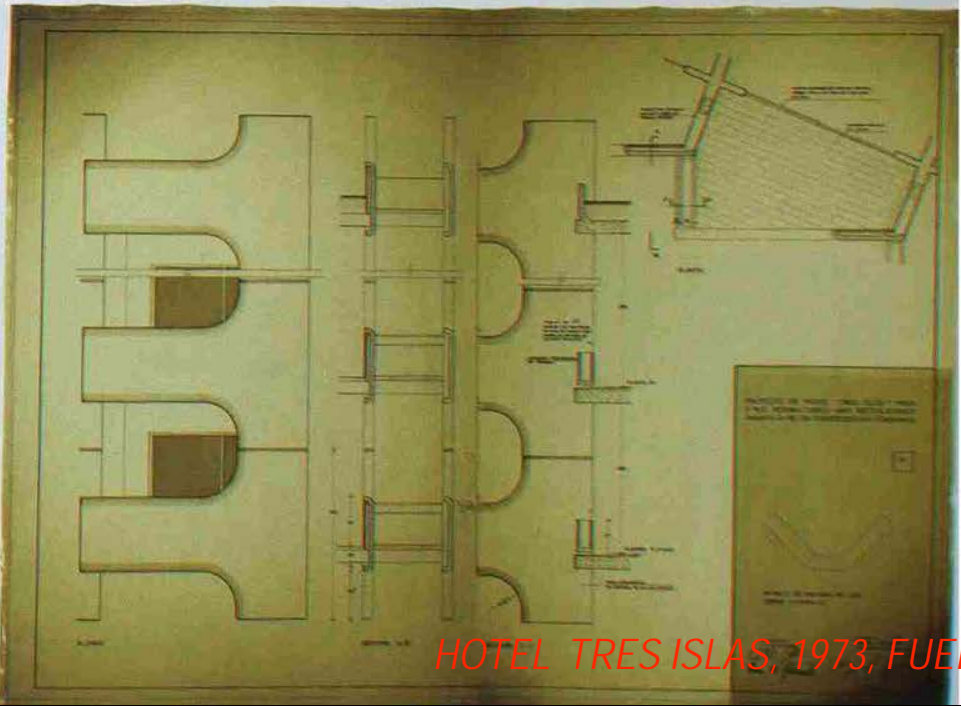
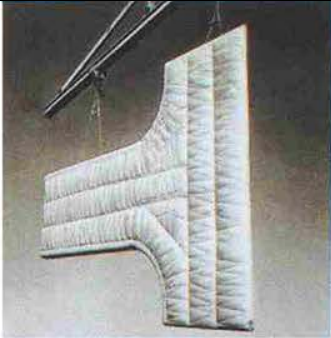
SANTA ANA PARISH CHURCH, 1971, MADRID



SANTA ANA PARISH CHURCH, 1971, MADRID



SANTA ANA PARISH CHURCH, 1971, MADRID



HOTEL TRES ISLAS, 1973, FUERTEVENTURA



JORBA LABORATORIES , 1967, MADRID



JORBA LABORATORIES, 1967, MADRID

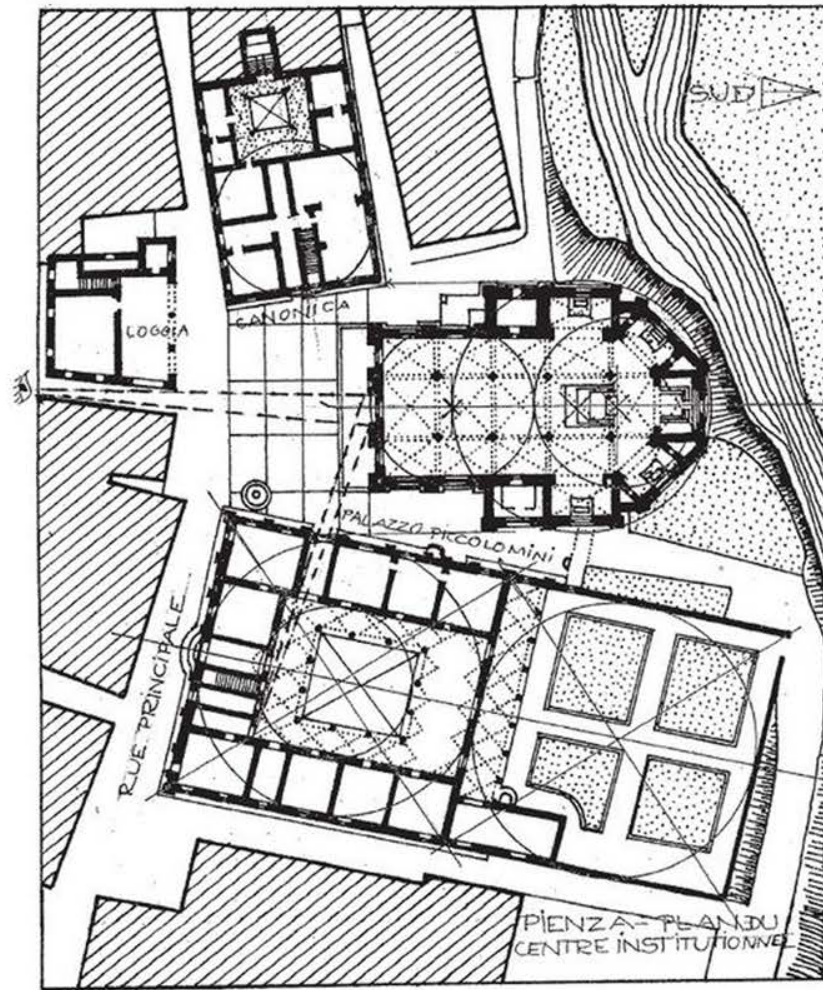


IBM OFFICE BUILDING, MADRID, 1969



*ALAN COLQUHOUN: SUPERBLOCK-
city form / architectural form*





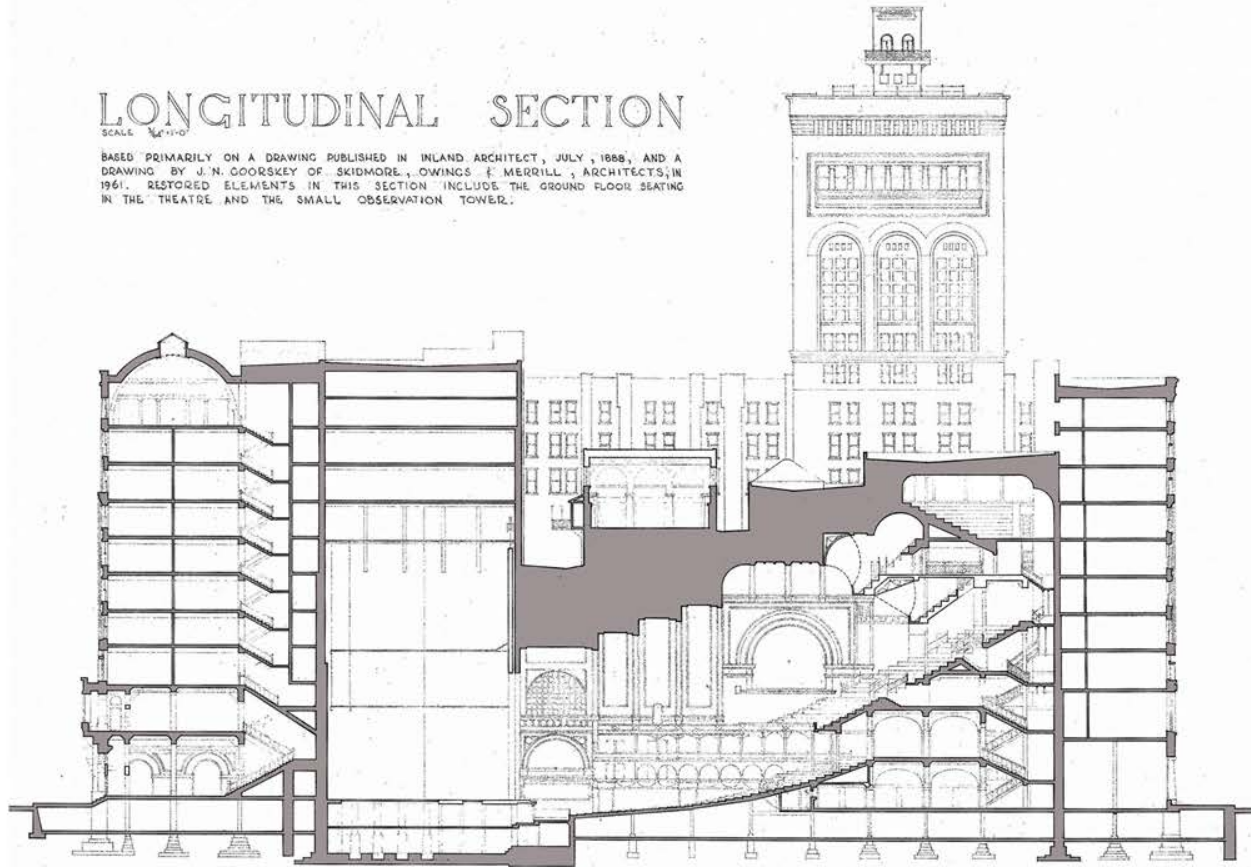




LONGITUDINAL SECTION

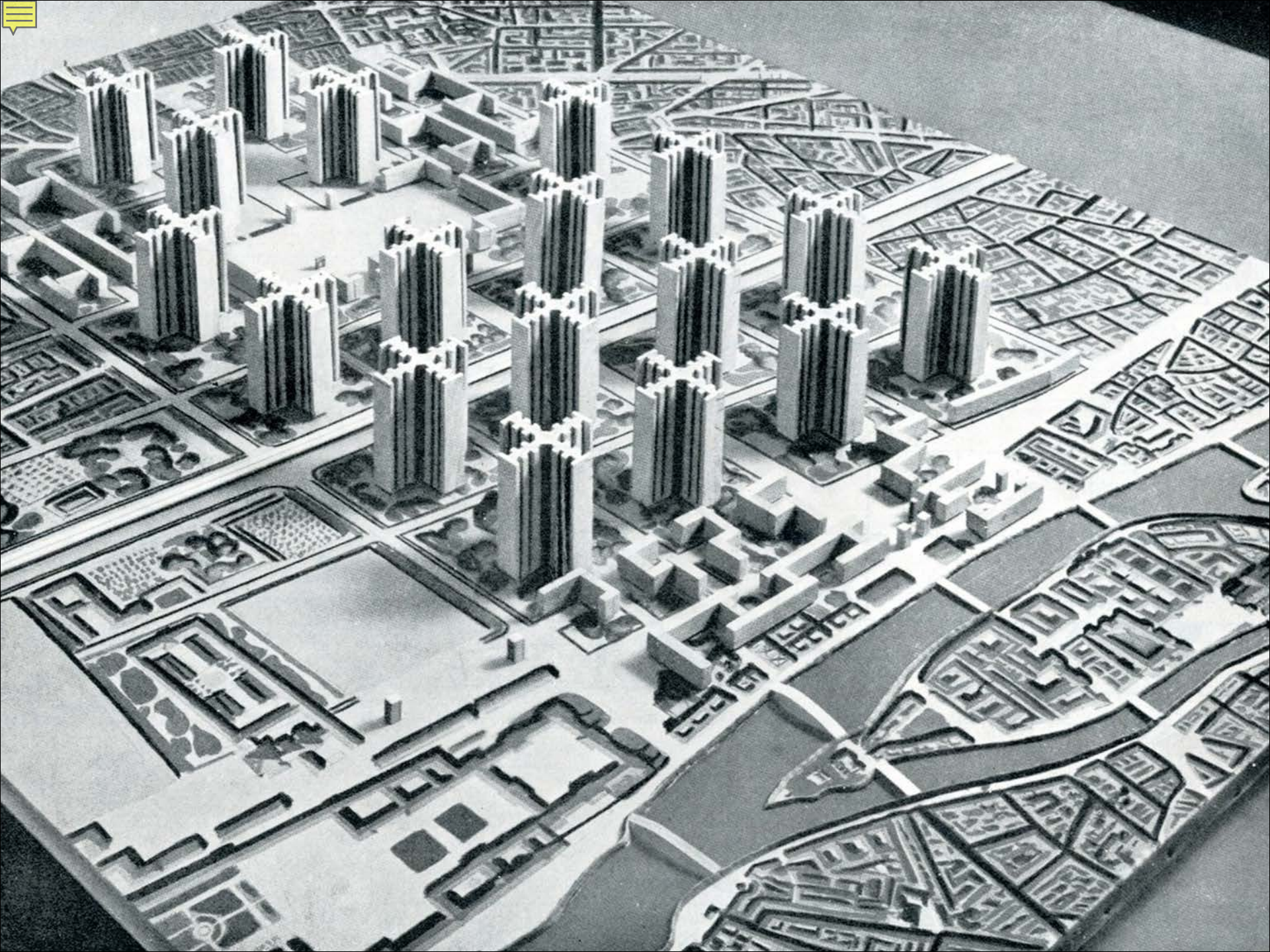
SCALE $\frac{1}{4}'' = 1'-0''$

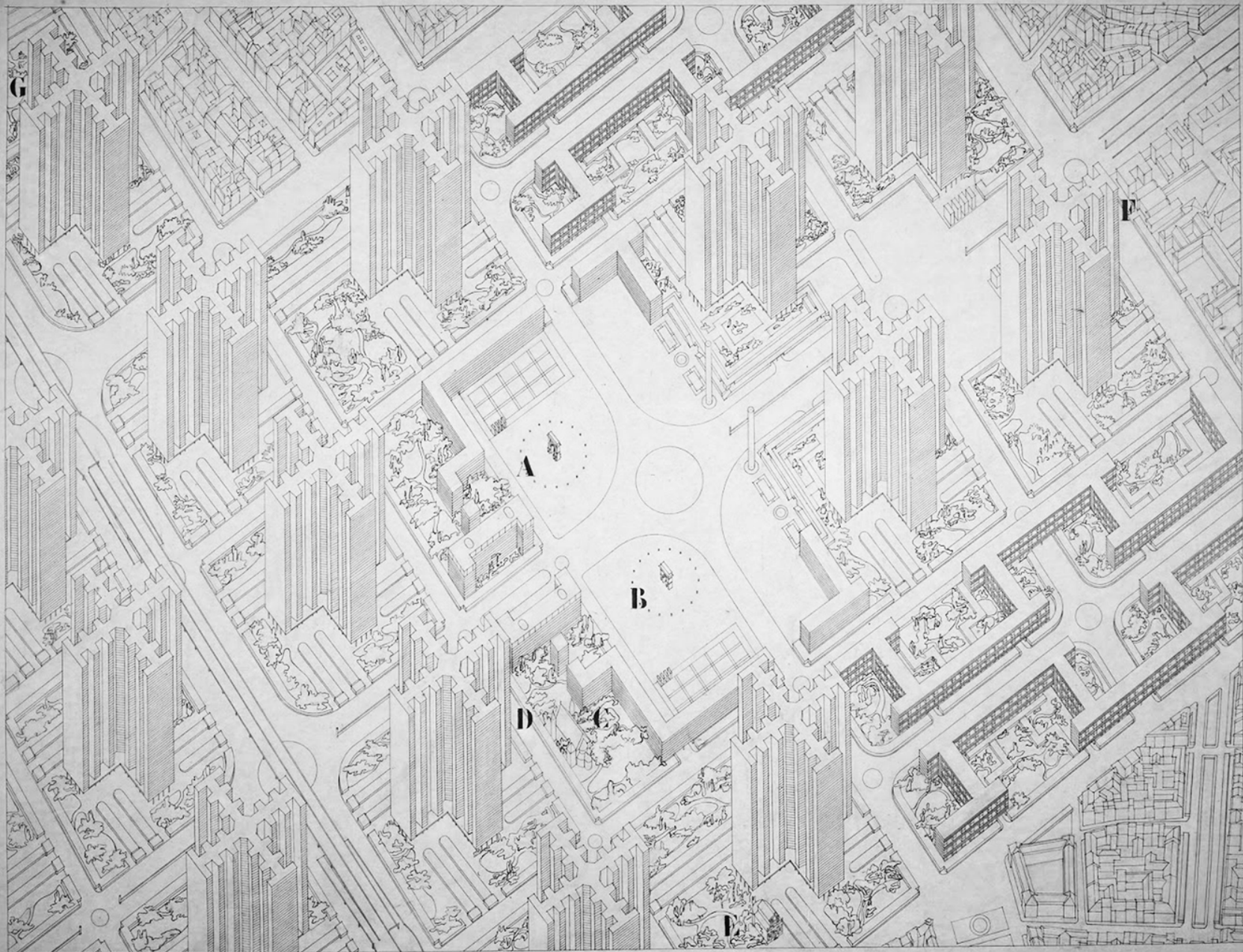
BASED PRIMARILY ON A DRAWING PUBLISHED IN INLAND ARCHITECT, JULY, 1938, AND A DRAWING BY J. N. COORSKEY OF SKIDMORE, OWINGS & MERRILL, ARCHITECTS, IN 1961. RESTORED ELEMENTS IN THIS SECTION INCLUDE THE GROUND FLOOR SEATING IN THE THEATRE AND THE SMALL OBSERVATION TOWER.

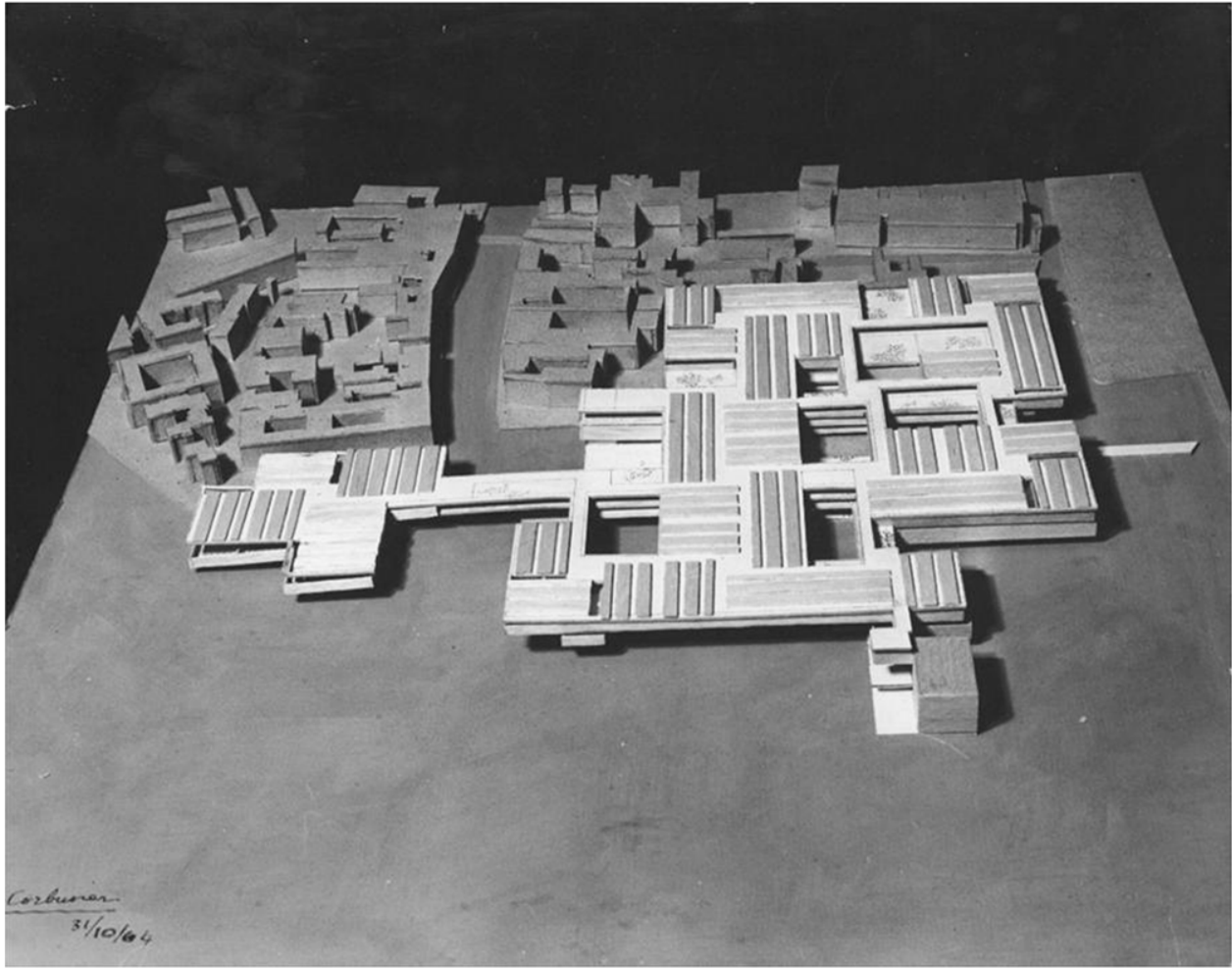


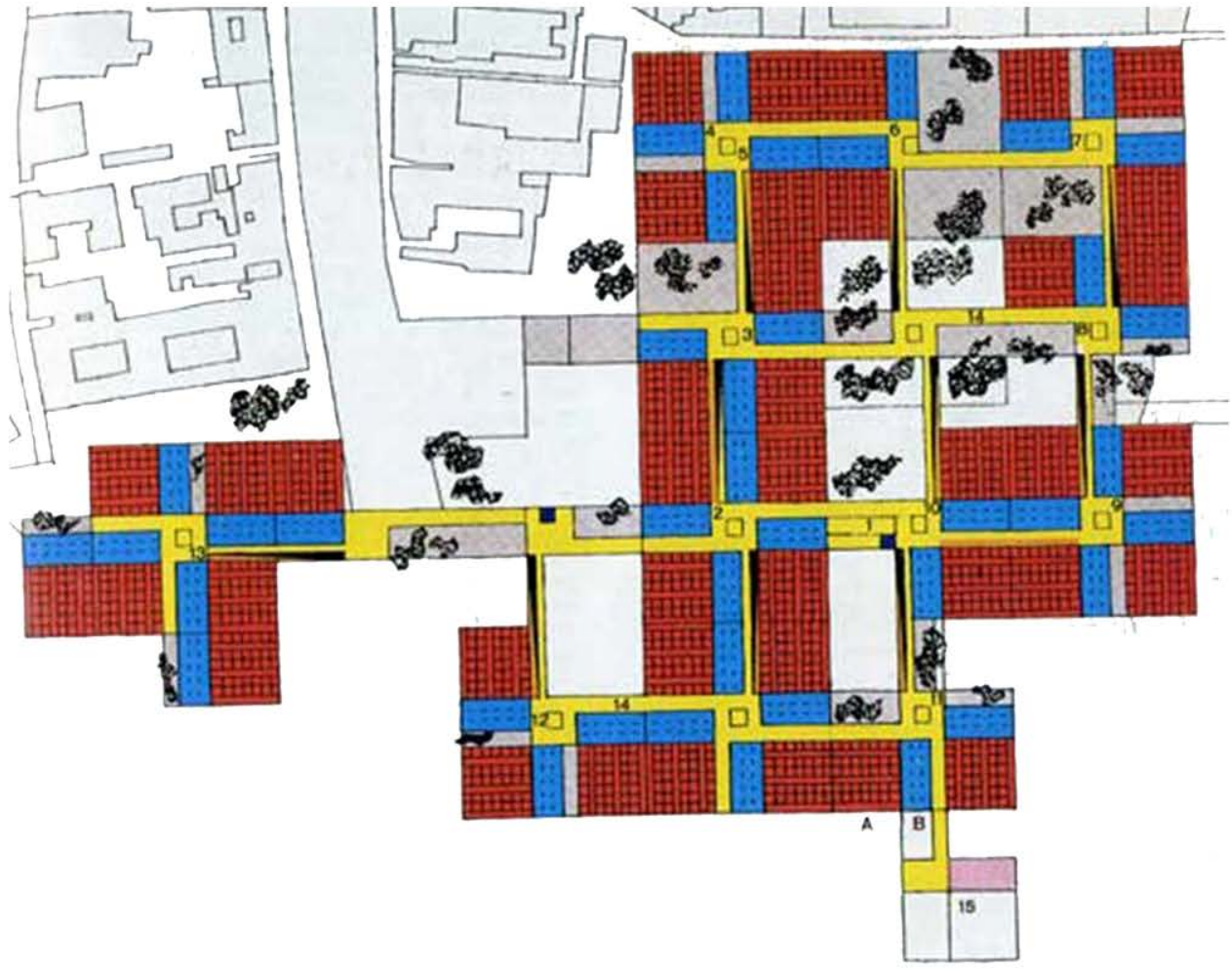
ROBERT C. GIBNER, DEL.

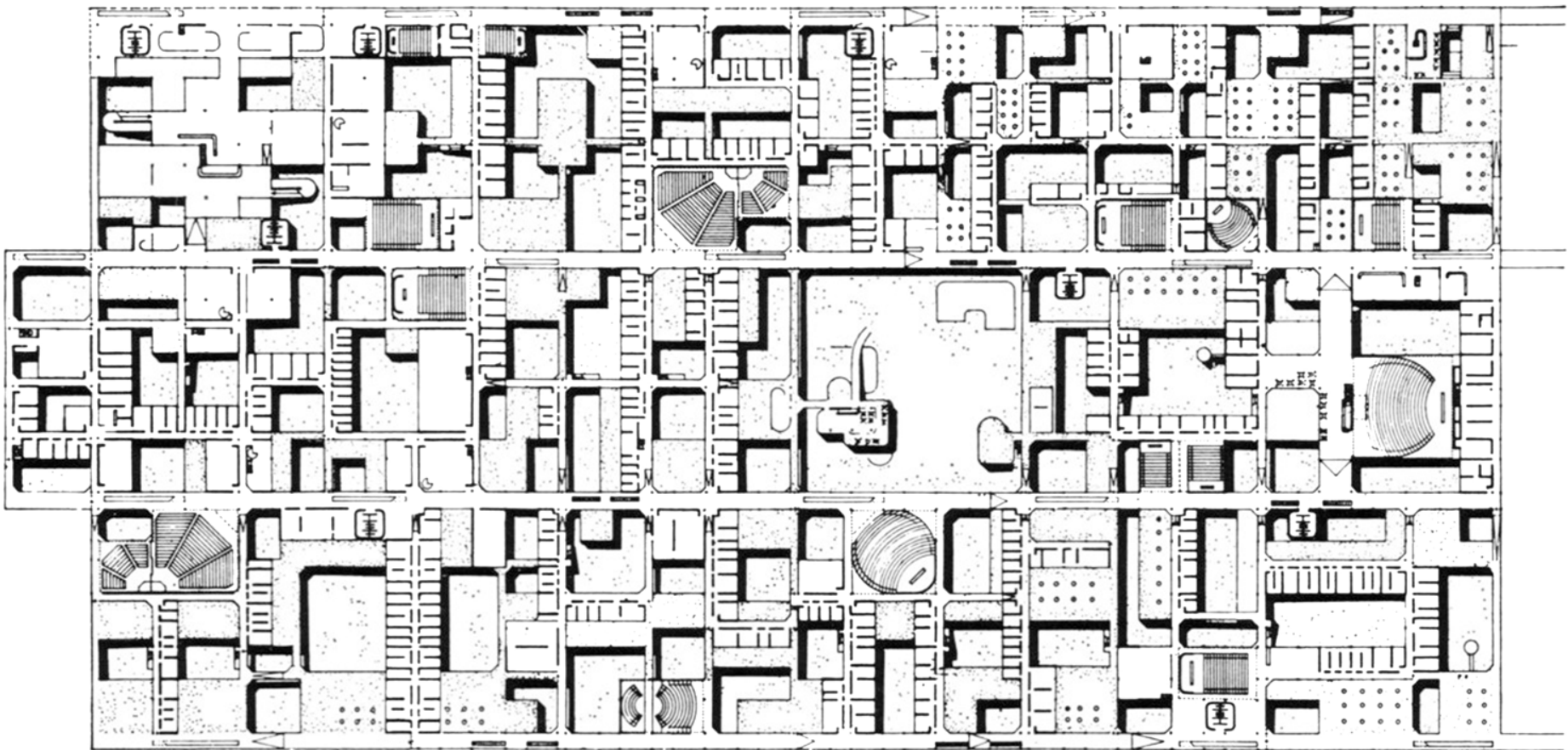
0 20 40
FEET SCALE $\frac{1}{4}'' = 1'-0''$













London, N.Y. Photo by J. J. ...



Group of men in suits on a modern architectural structure, possibly a balcony or walkway, with white railings and columns. The caption is handwritten and partially illegible.

Handwritten signature or name in the bottom right corner of the photograph.





