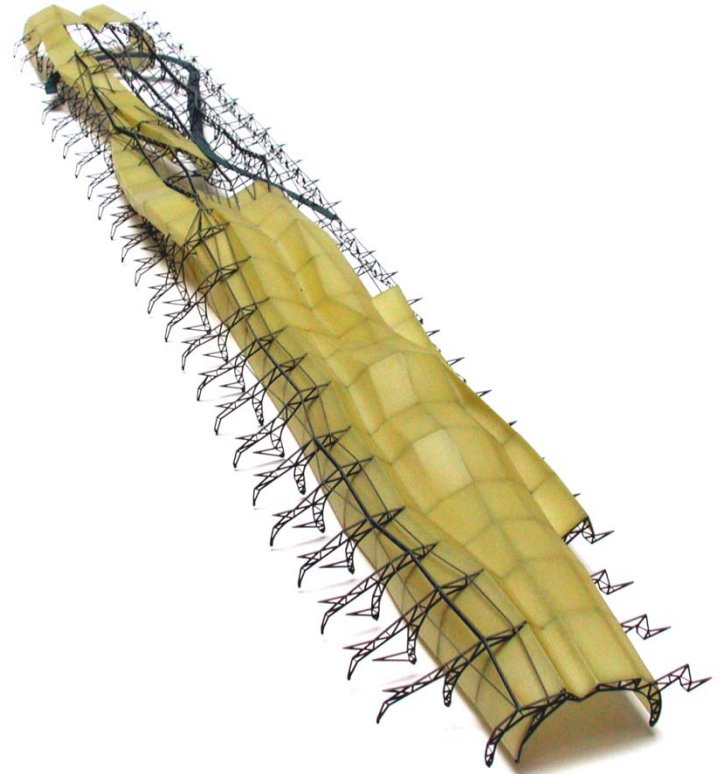


NANAKO UMEMOTO

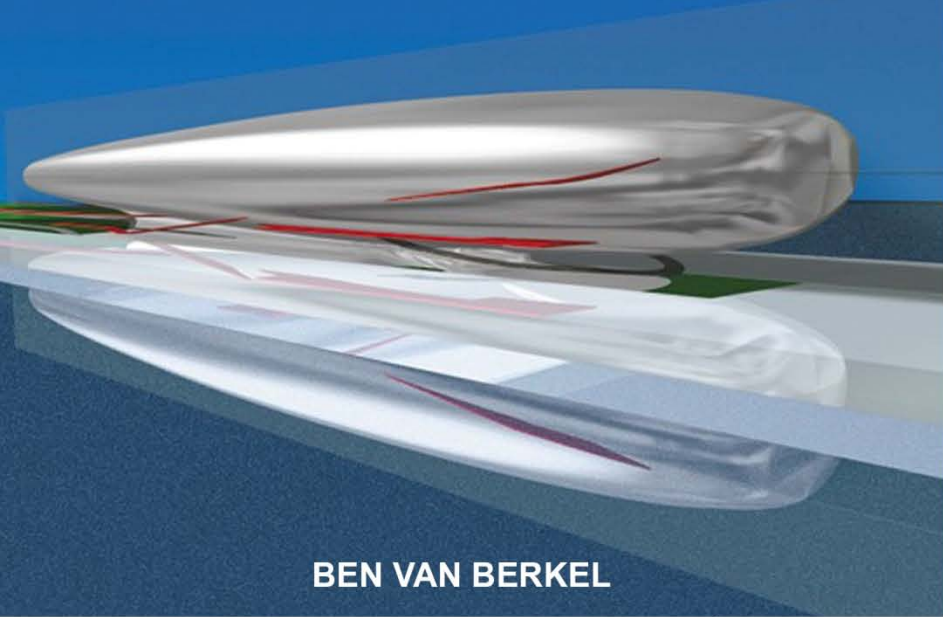
YOKOHAMA REDUX



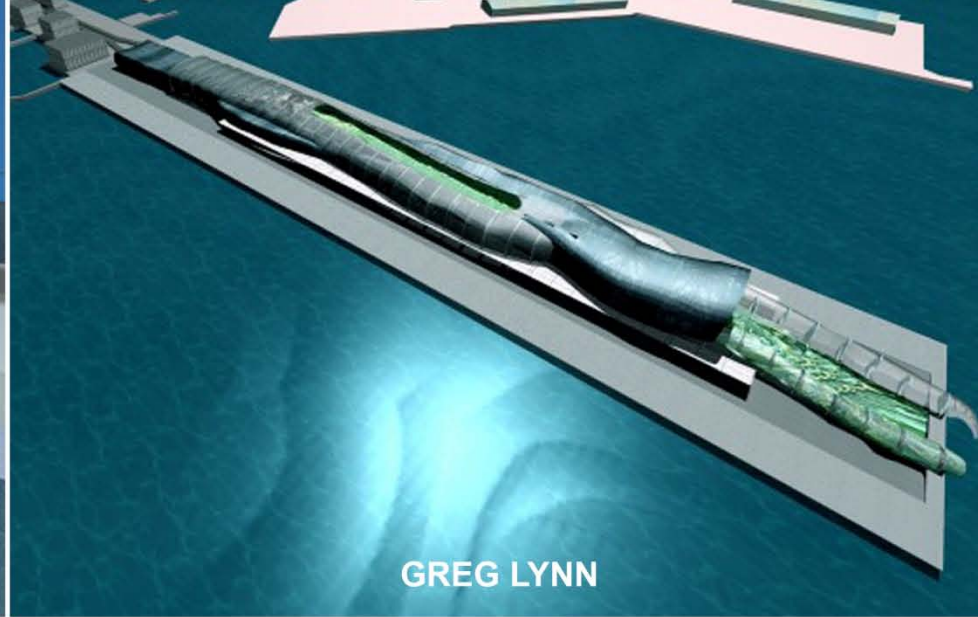
FOREIGN OFFICE OF ARCHITECTS



REISER + UMEMOTO



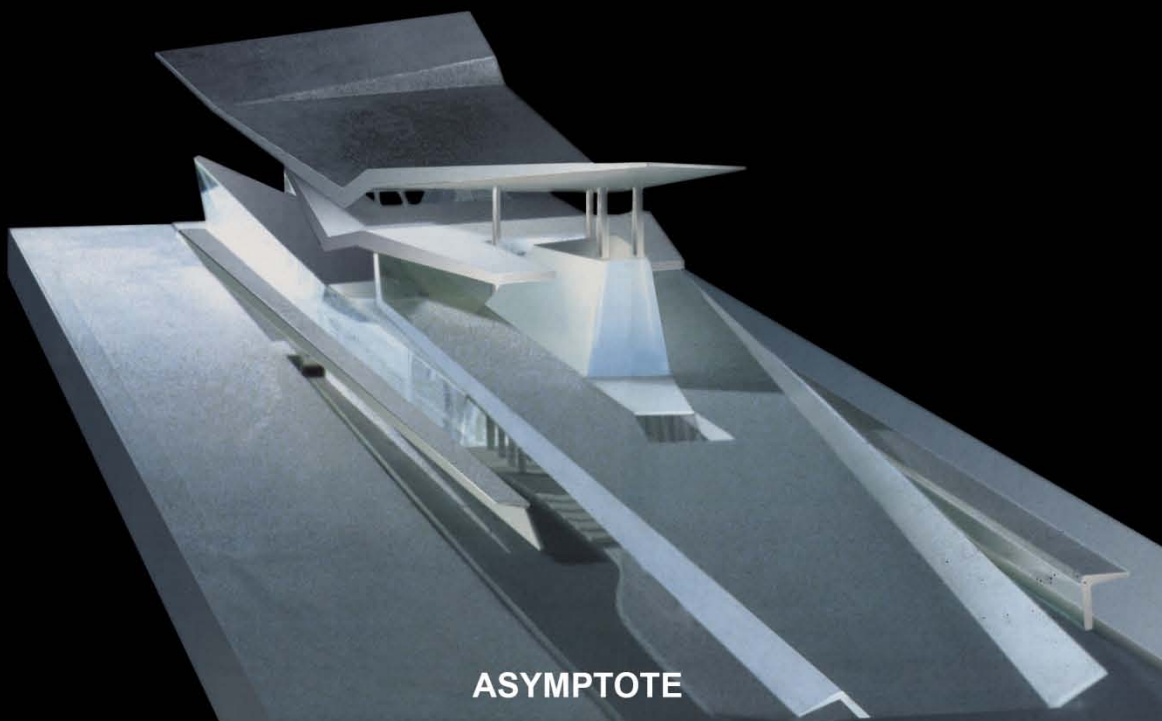
BEN VAN BERKEL



GREG LYNN



REISER + UMEMOTO



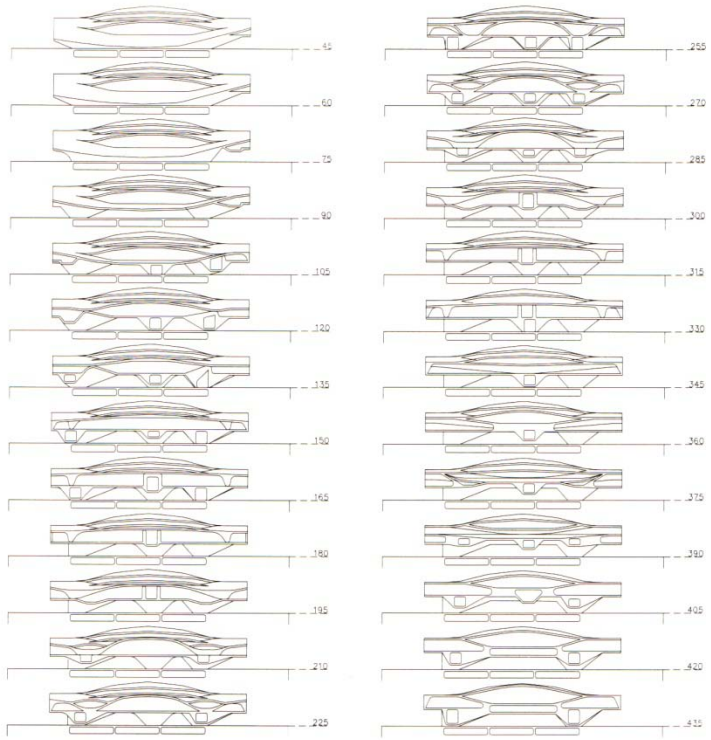
ASYMPTOTE



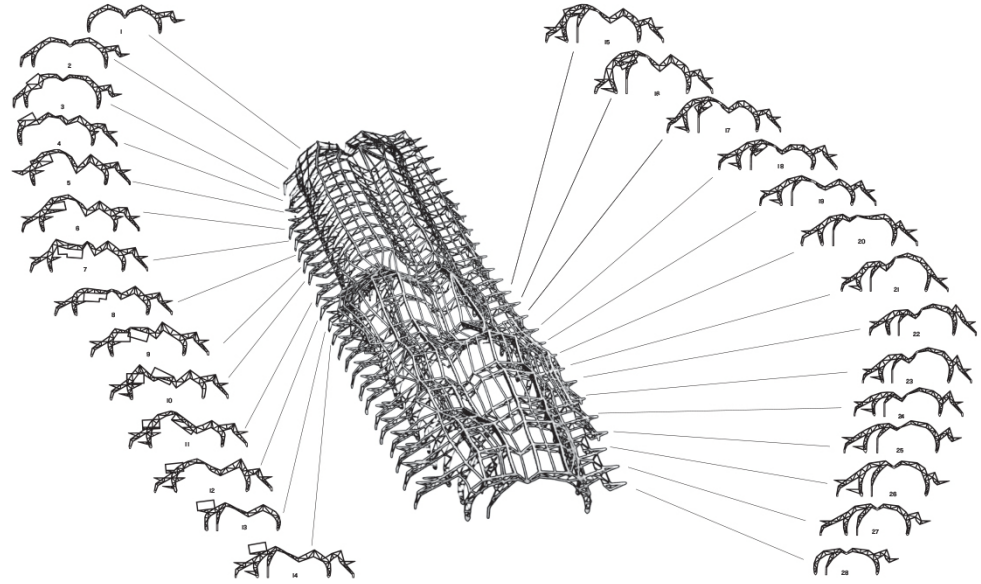
FOA



RUR



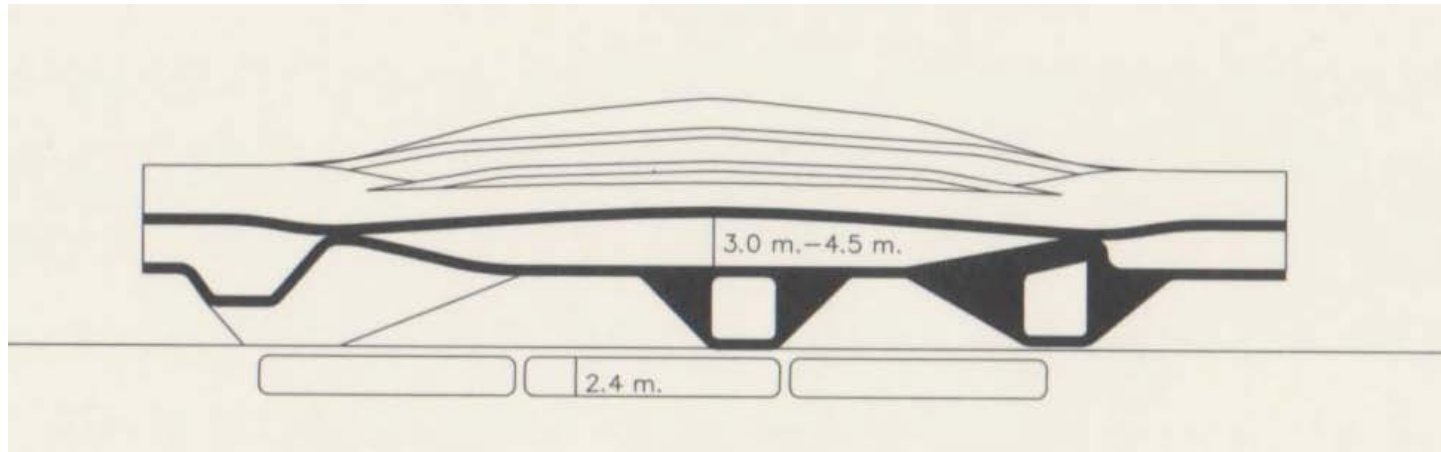
FOA



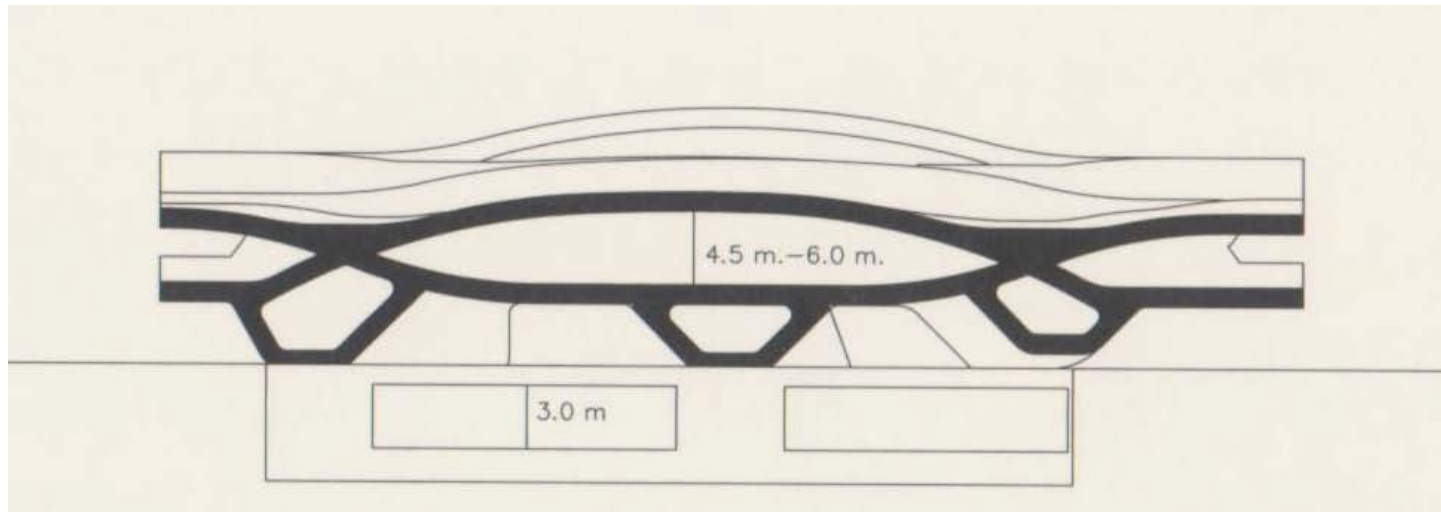
RUR

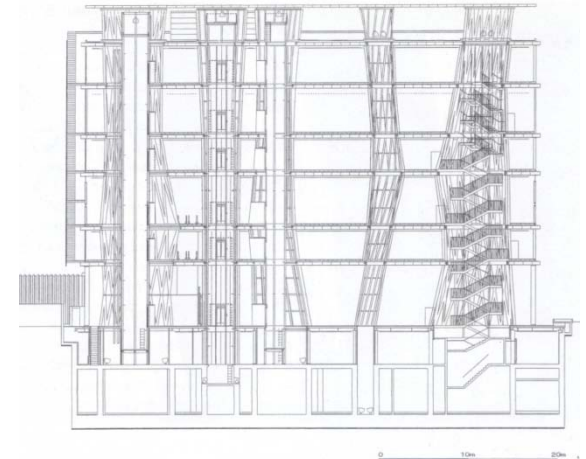
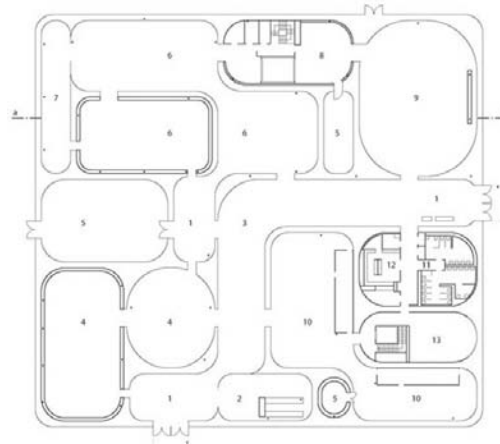
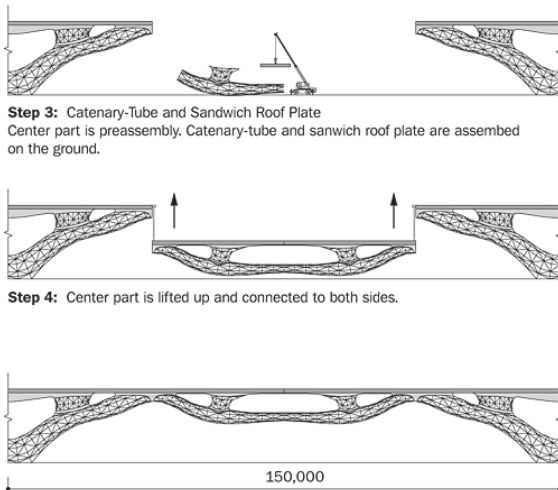


BEFORE

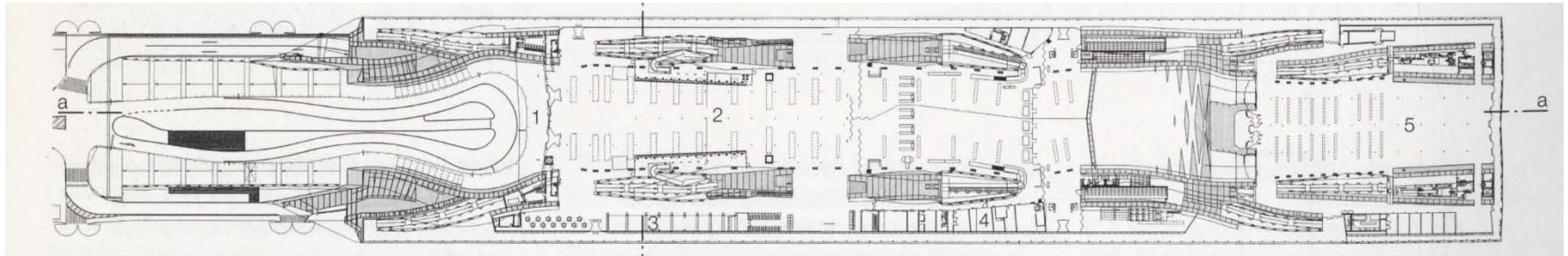


AFTER

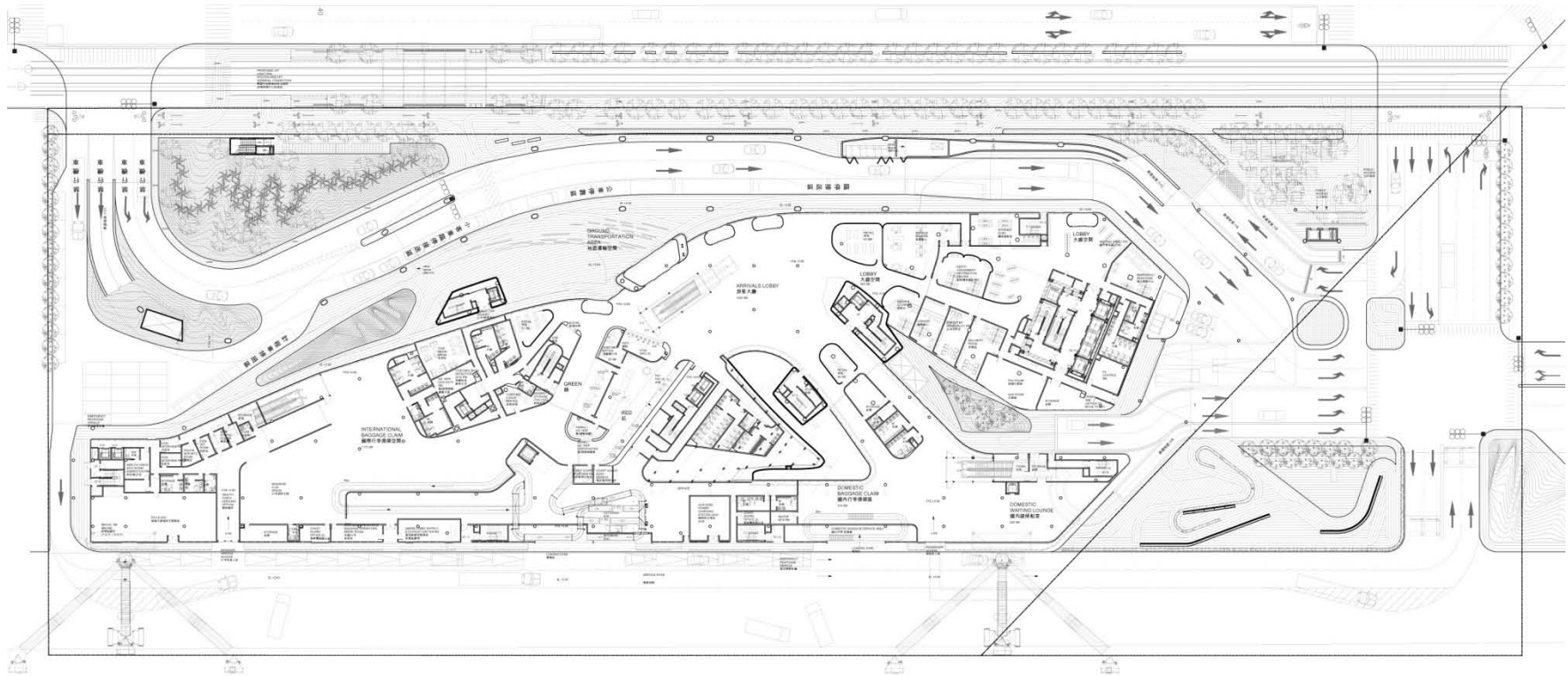




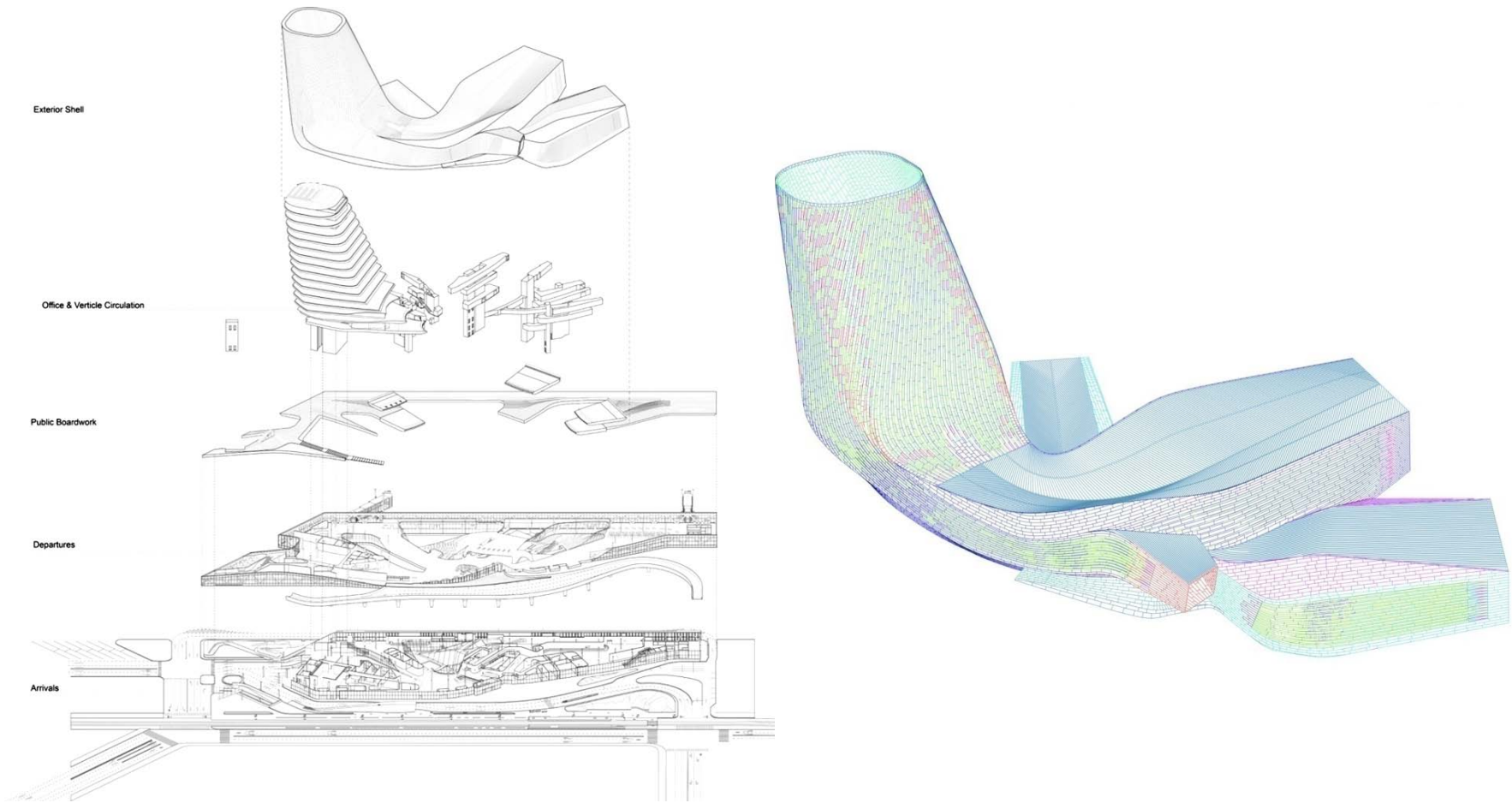
Unification of Structure and Infrastructure



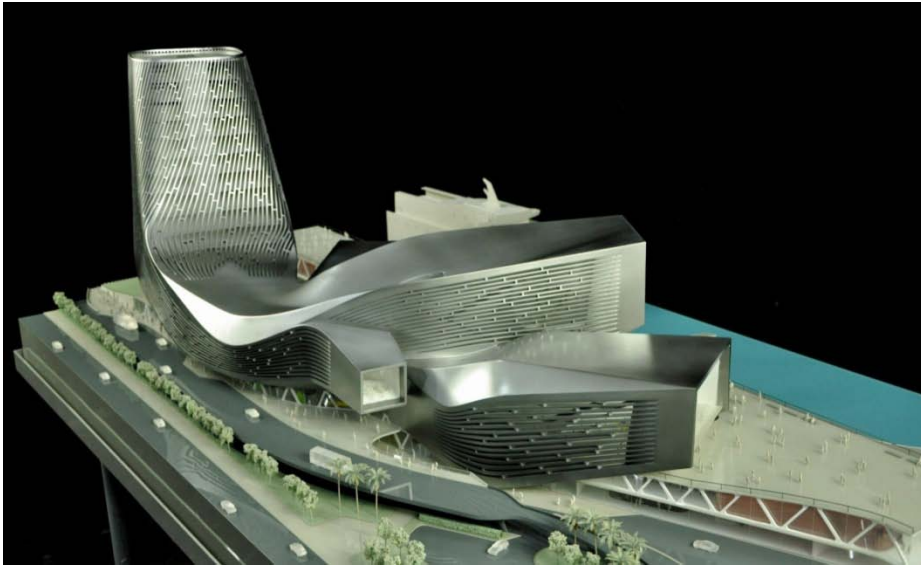
**Yokohama Port Terminal
First Floor**



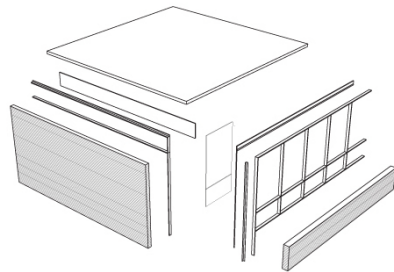
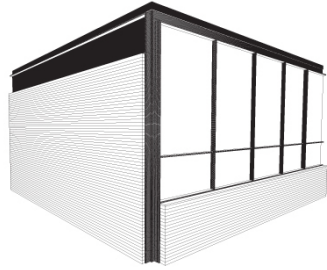
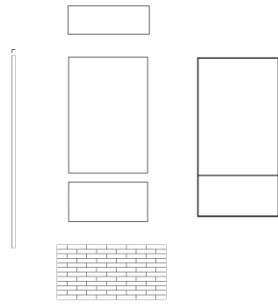
**Kaohsiung Port Terminal (RUR)
First Floor**



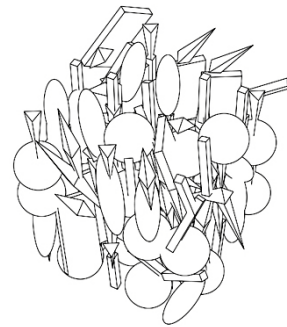
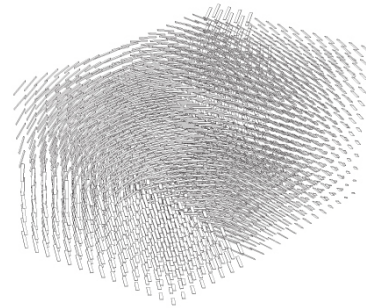
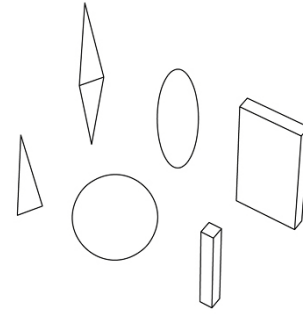
Kaohsiung Port Terminal



**Kaohsiung Port Terminal
Site Remediation**



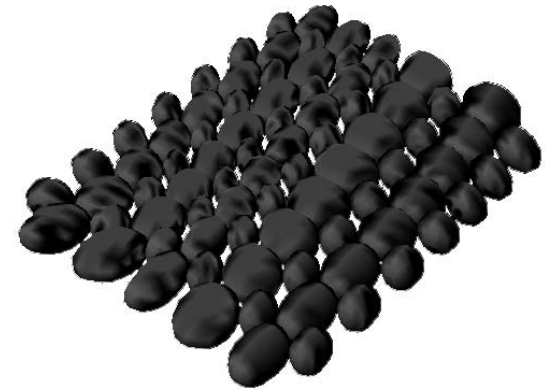
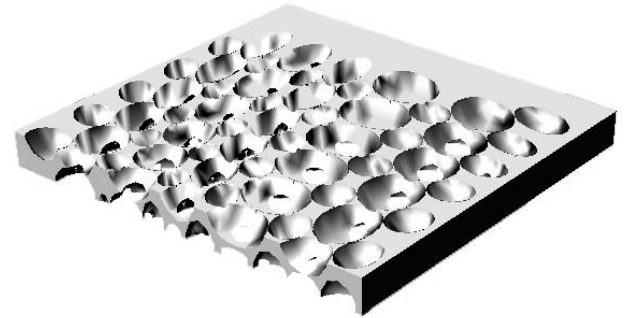
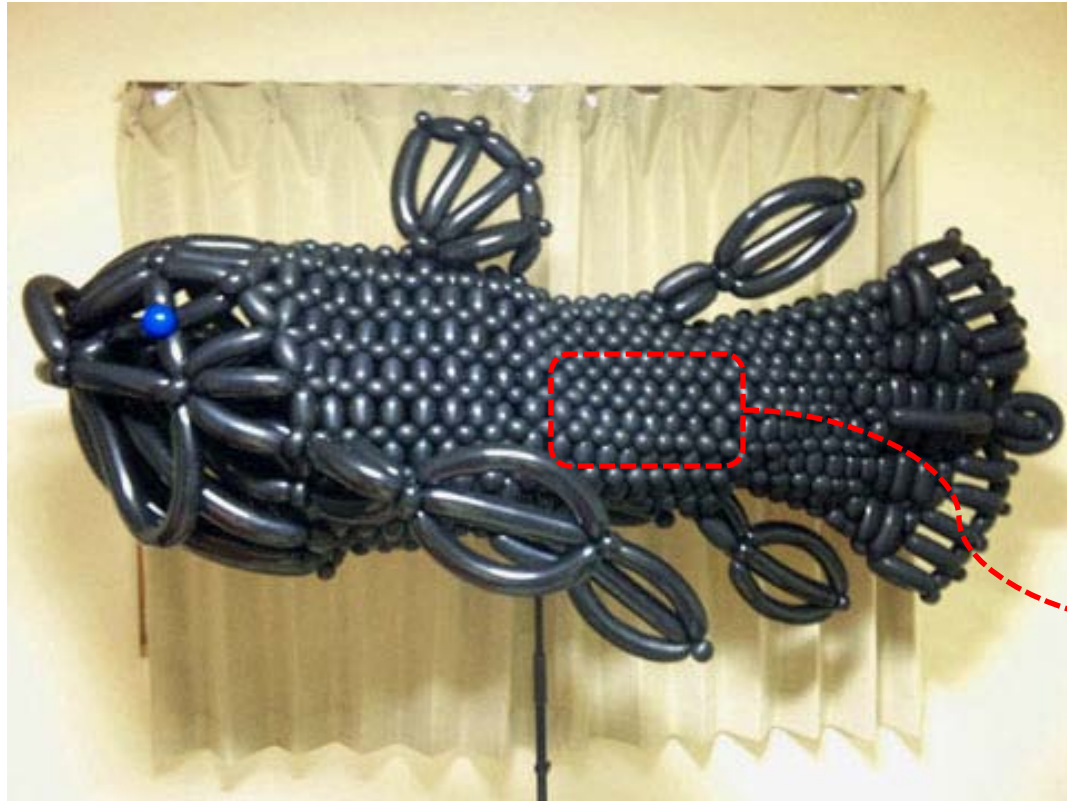
Simple Nested Hierarchy



Complex Hierarchy



solid / void



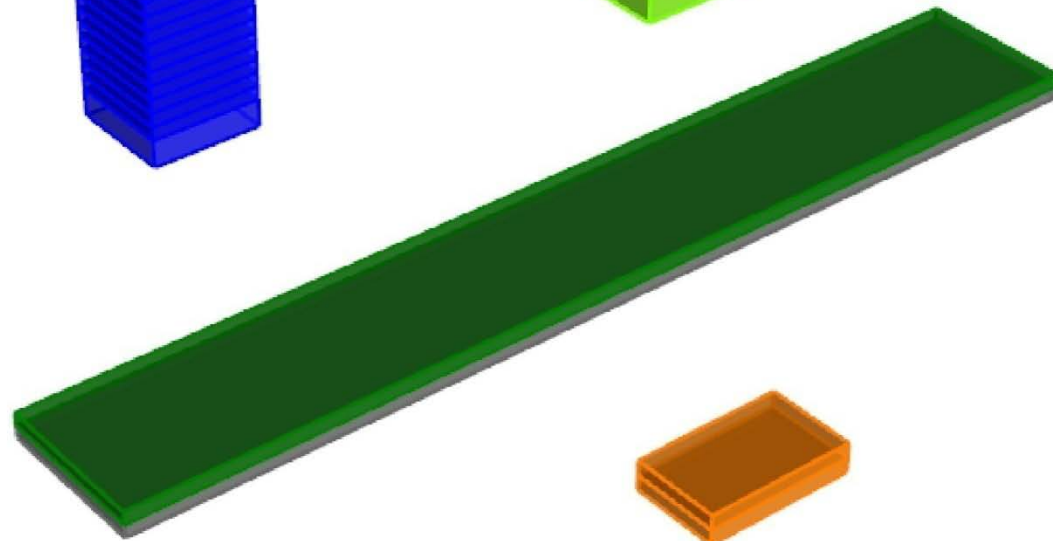
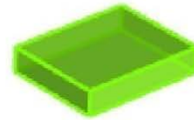
solid / void

PROGRAM:

The Tower
(field-rival)



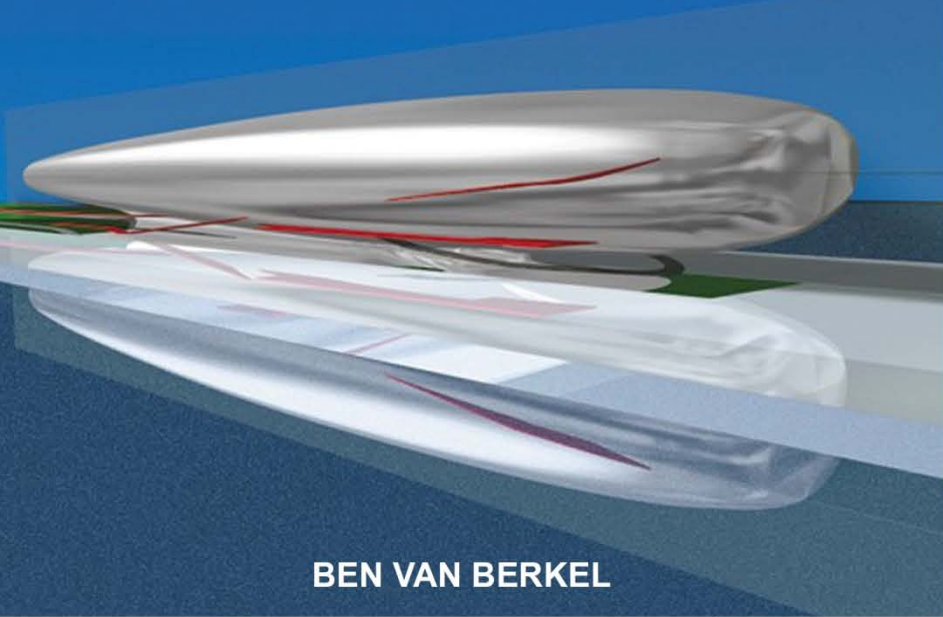
Osanbashi Hall
(field-object)



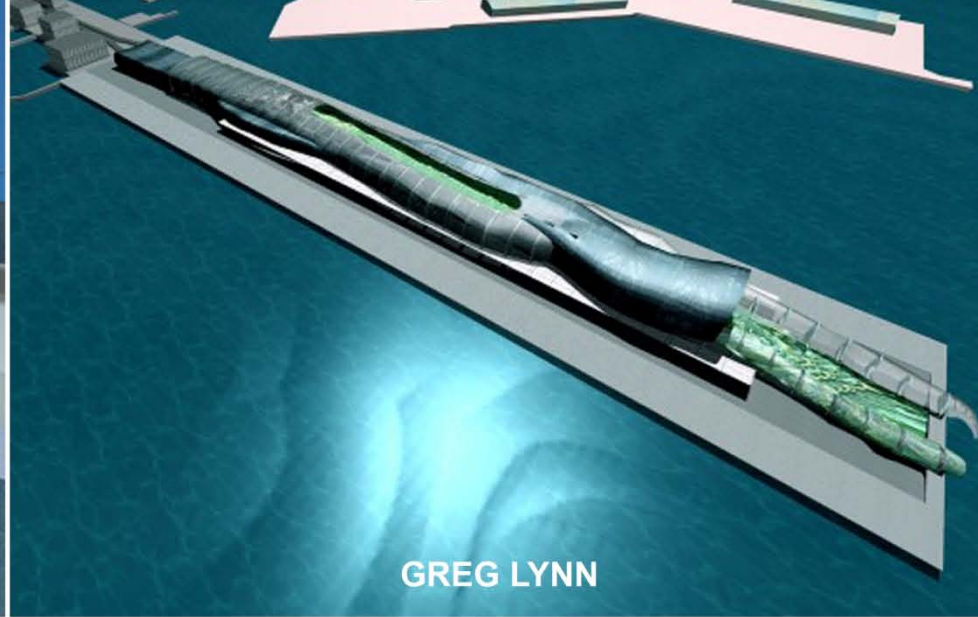
Terminal / Parking
(the field)



The Restaurant
(discrete object)



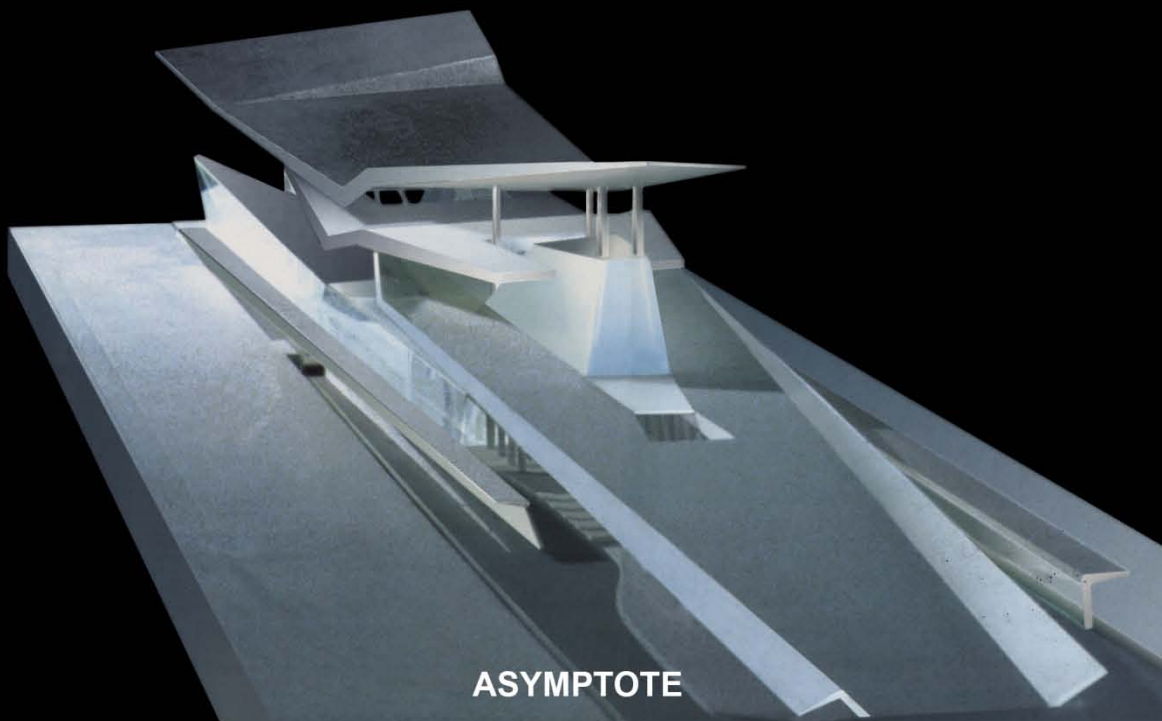
BEN VAN BERKEL



GREG LYNN



REISER + UMEMOTO



ASYMPTOTE

