

Kimmel Center Public Space Project

PennPraxis

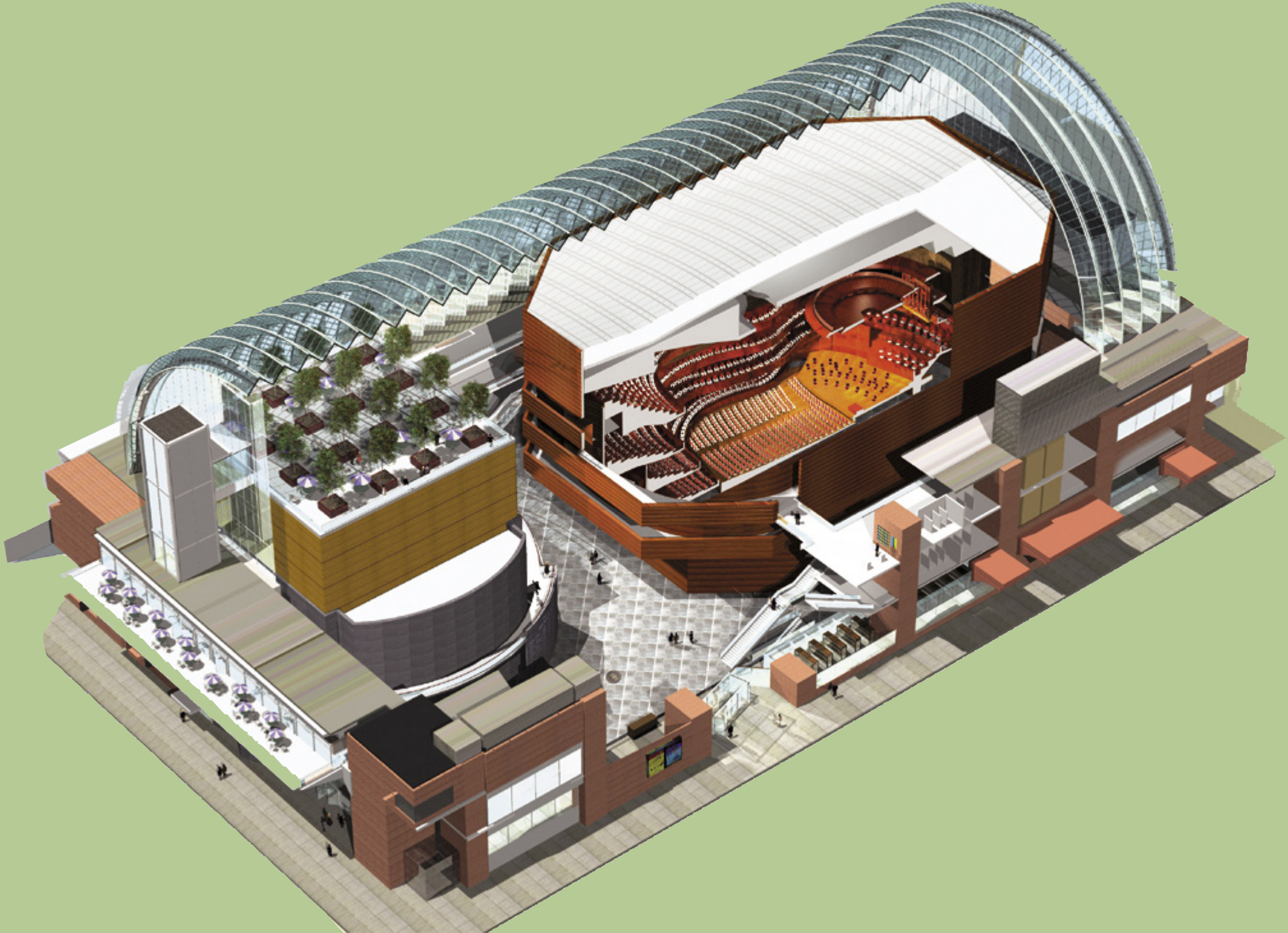
PennDesign

Penn Project for Civic Engagement

University of the Arts



so what's not to love?



exterior and interior challenges





a public dialogue



the civic design principles

- 1 Inside/Out and Outside/In**
- 2 Treat Commonwealth Plaza as the third arts venue—
an inclusive public venue**
- 3 Create magnets to lure mixed uses and mixed users**
- 4 Offer a warmer welcome—and a map to navigate**
- 5 WOW! What now?**
- 6 Balance aesthetic values and commercial appeal**

common ideas

Invite people in with a new entrance at 15th and Spruce

Enliven the Spruce Street side in diverse ways, in and out

Offer food, wifi, and places to linger at the Plaza level

Create a rooftop garden oasis

starting a conversation

28 students

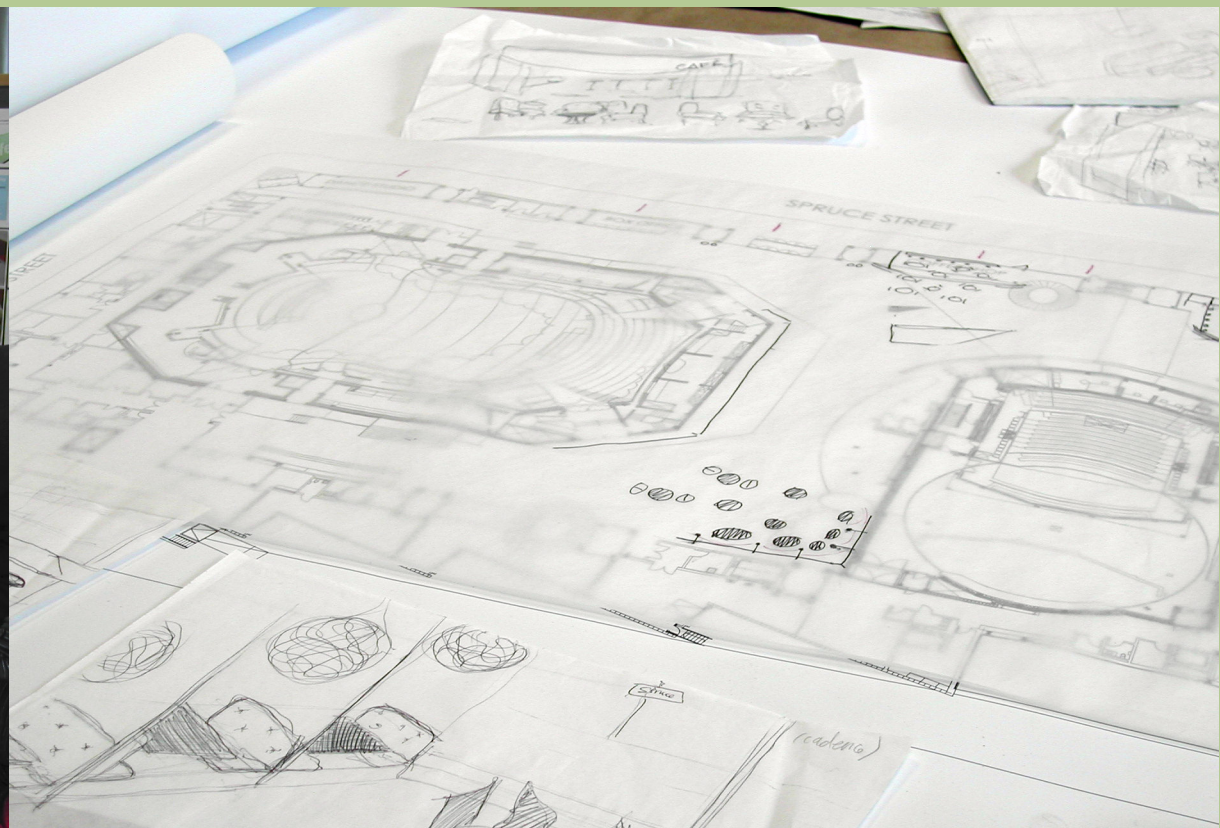
4 professors

2 schools

**200+ passionate citizens
the Kimmel Center staff**

and

many generous professionals



...led to 3 “big ideas”

Humanizing Space

Connect to the Arts

Sensory Experience

tonight's work

Small-Group Discussion

**Which ideas—big or small—
would draw you to come to the Kimmel?**

**How do you rate each Design Principle
in terms of how important you think it is
to improving the Kimmel?**

Civic Feedback Form

**Distributed by moderators, and
completed at the final plenary session**

ground rules

**The moderator is there
to guide your discussion,
while remaining neutral and impartial.**

Your role is to:

Listen to each other

Respond to each other

Ask clarifying questions;

help to develop each other's ideas

Allow everyone a chance to speak

Encourage each other to participate,

inviting others to speak

and making room for their voices

Explore areas of disagreement,

search for new ideas and possibilities

next steps

PlanPhilly: www.planphilly.com/kimmel

Feedback Results

Design Drawings

Online Survey

Project Updates

Additional Comments?

Chris Satullo: csatullo@phillynews.com

Harris Sokoloff: harriss@gse.upenn.edu

PennPraxis: praxis@design.upenn.edu

Design Work

**Penn and UArts students continue through
Spring 2008 semester.**

**May-June 2008: Present final work to
Kimmel Board and senior staff**