



EPSON P5000

PRINTING INSTRUCTIONS


Loading Paper in the Paper Cassette

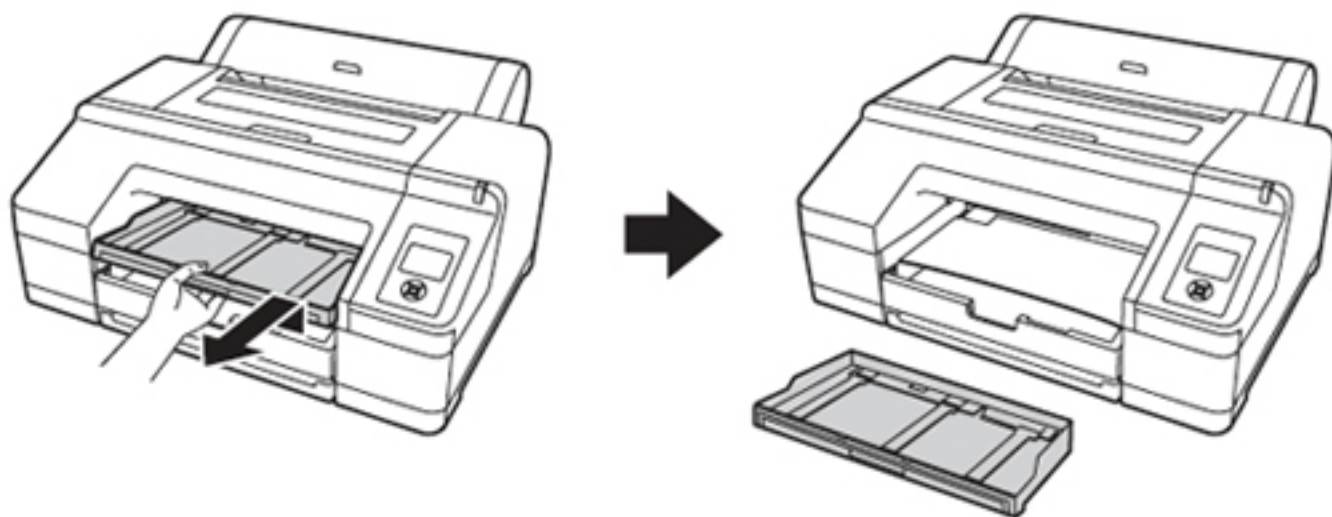
You can load up to 250 sheets of plain paper in the cassette. The following table lists a guideline for paper cassette capacity for various types and sizes of Epson paper:

Epson cut sheet paper capacity

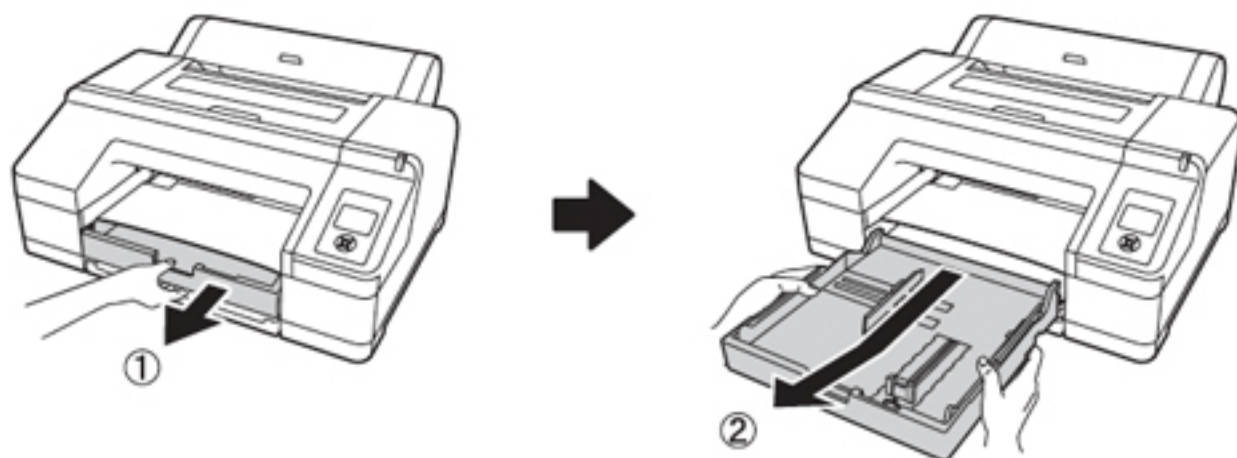
Paper type	Size (inches)	Loading capacity
Premium Photo Paper Semi-gloss	8.5 × 11	100
Premium Semigloss Photo Paper	13 × 19	50
Ultra Premium Photo Paper Luster	8.5 × 11	100
Premium Luster Photo Paper	11.7 × 16.5 13 × 19	50
Singleweight Matte Paper	13 × 19	100
	17 × 22	50
Presentation Paper Matte	8.5 × 11	200
Photo Quality Ink Jet Paper	11 × 17 13 × 19	100
	17 × 22	50
Proofing Paper White Semimatte	13 × 19	100
Proofing Paper Commercial		
Standard Proofing Paper 240		
Standard Proofing Paper SWOP 3		
Ultra Premium Presentation Paper Matte	8.5 × 11	100
Enhanced Matte Paper	11.7 × 16.5 13 × 19 17 × 22	50

Follow these steps to load cut sheets in the paper cassette:

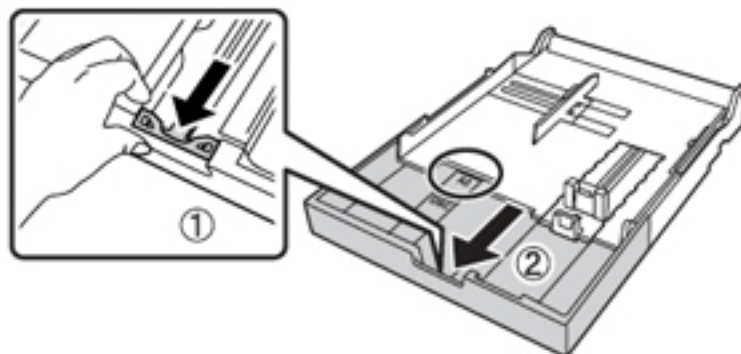
1. Make sure the printer is turned on, then press the ◀ Paper Source button and press ▼ to highlight CUT SHEET.
2. Press OK.
3. The  sheet icon appears on the LCD screen.
4. Lift the edge of the output tray to remove it.



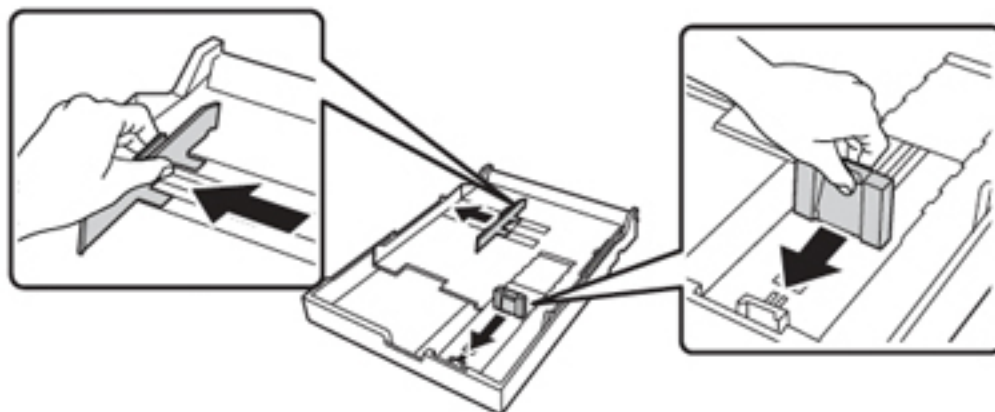
5. Slide open the paper cassette, lift it slightly and then pull it out.



6. If your paper is size A3 or larger, extend the paper cassette to match the size of the paper.



7. Slide the edge guides outward.

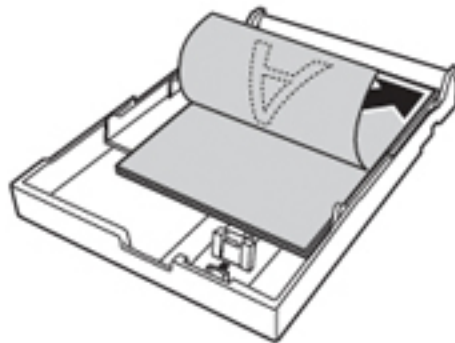


- Thumb through a stack of paper, then gently tap it on a flat surface to even the edges.

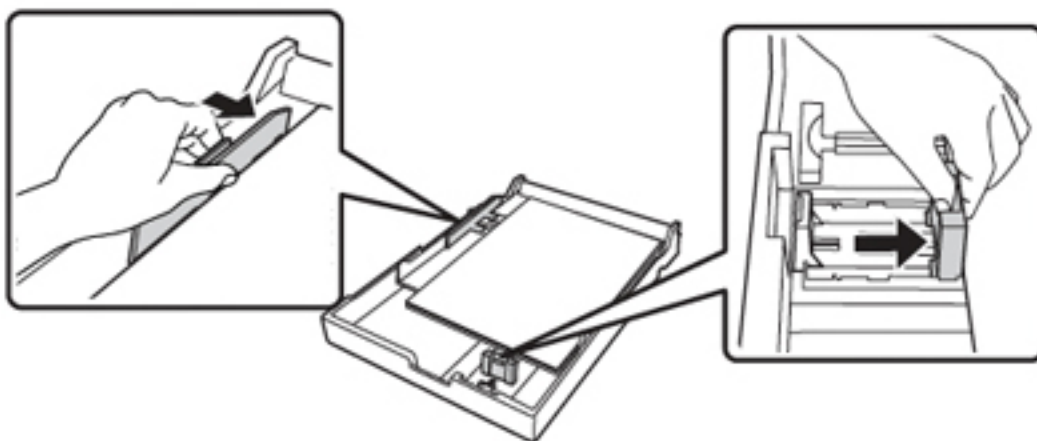


- Load the sheets with the printable side face-down, in the portrait orientation (short edge first). Place the paper all the way back in the paper cassette and next to the right edge.

Make sure the stack of paper fits under the arrow on the left edge guide.



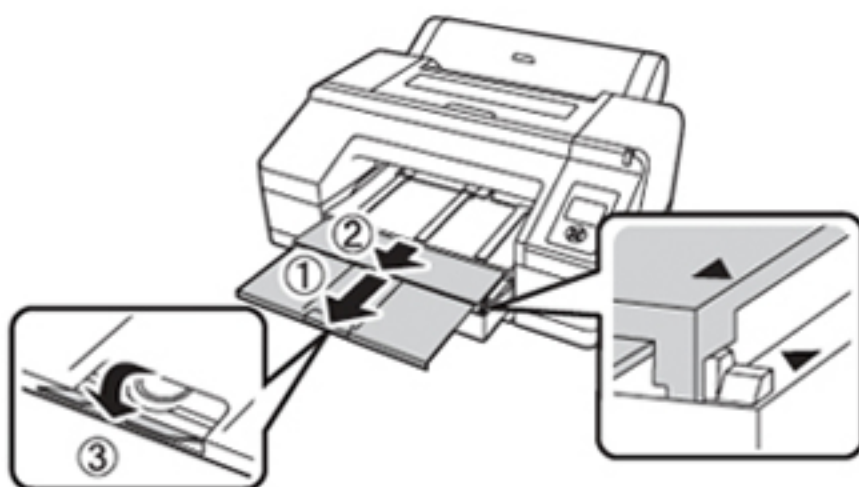
- Slide the edge guides against the paper, but not too tightly.



11. Insert the paper cassette. Push it firmly into the printer.





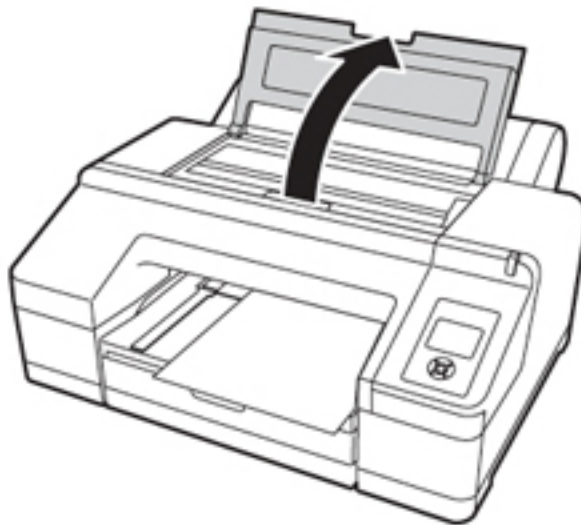
12. Replace the output tray and adjust its length to fit your paper size.



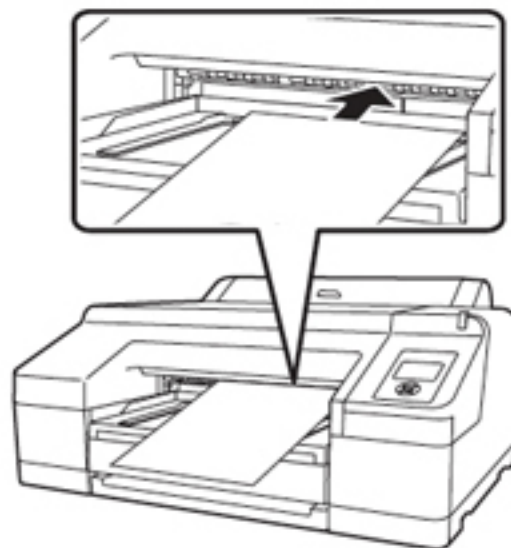
Using the Front Manual Feed Slot

If you want to print on posterboard or other media 31 to 59 mil (0.8 to 1.5 mm) thick, you must use the manual feed slot. This provides a straight-through paper path. Be sure to allow enough room behind the printer so the paper is not bent when it feeds into the printing position.

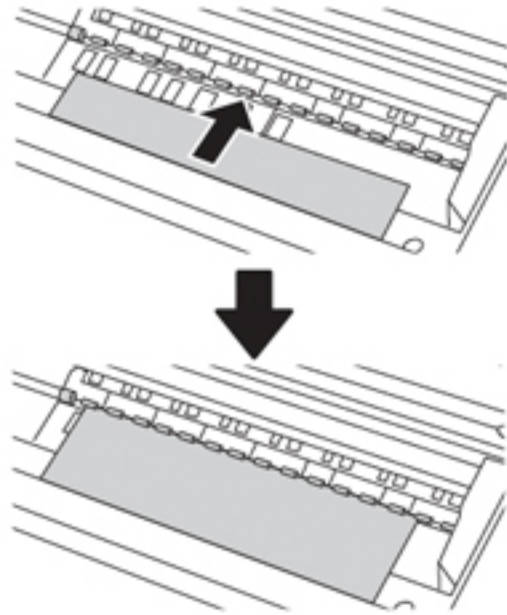
1. Make sure the printer is turned on, then press the ◀ Paper Source button until the  sheet icon appears on the LCD screen.
2. Press the  button to release the paper.
3. Open the top cover.



4. Insert the sheet face-up, above the black rollers.

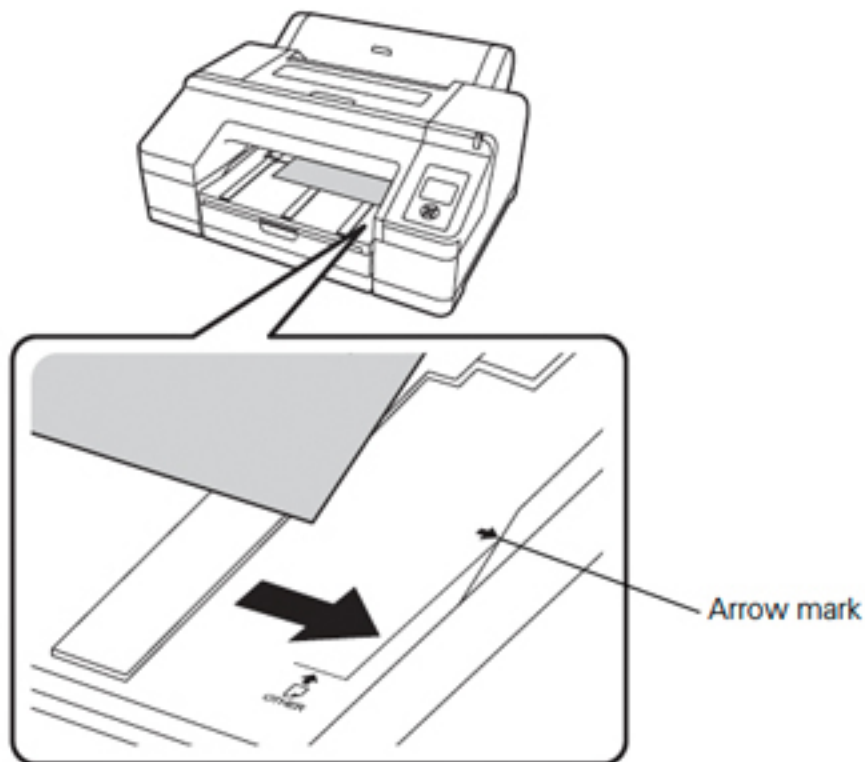



5. Push the paper under the gray feed rollers inside the printer.

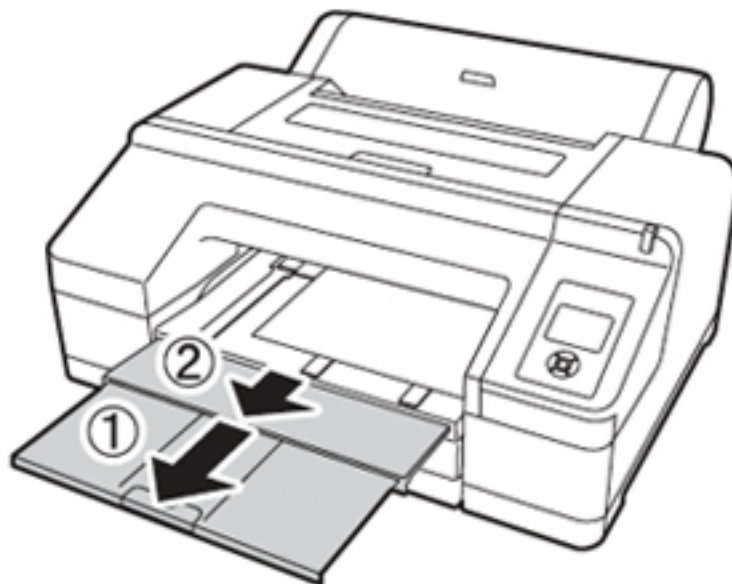


6. Align the edge of the paper with the mark on the paper cassette cover, as shown below. For longer sheets, make sure you align the right edge of the sheet with the arrow mark on the right and the leading edge with the OTHER mark.

Then close the top cover.




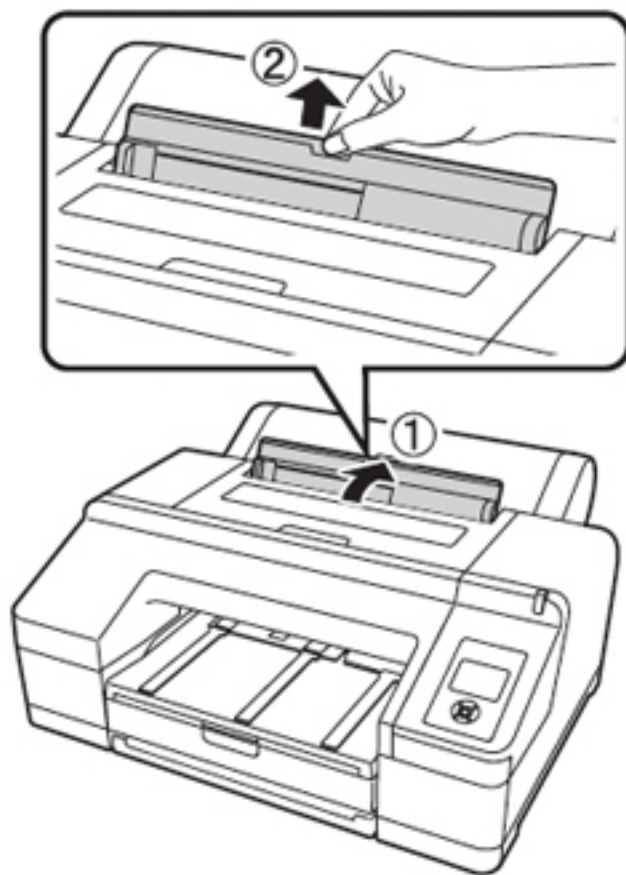
7. Press the  button. The printer automatically feeds the paper into printing position.
8. Extend the output tray and cover if necessary to support the sheet as it comes out of the printer. Make sure the roll paper cover is not open.



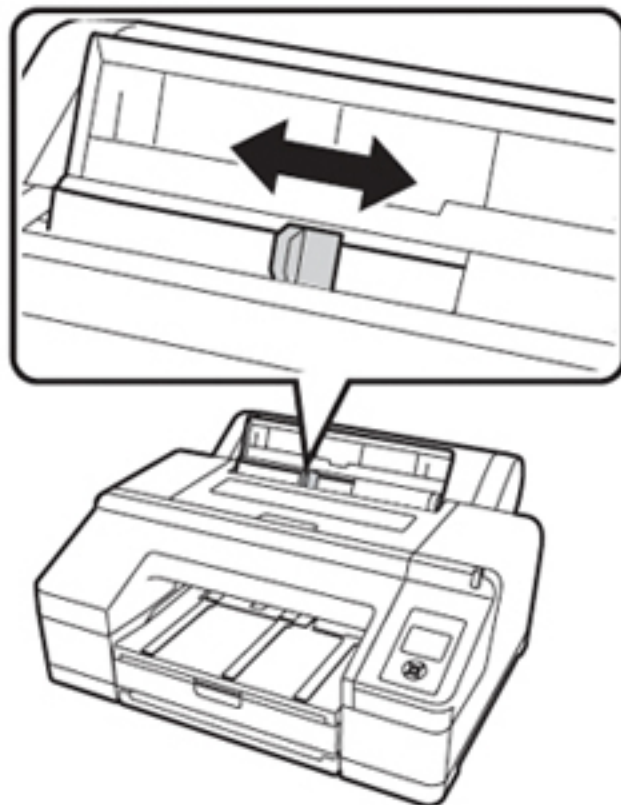
Using the Rear Manual Feed Slot

You may use the rear manual feed slot for thicker media types such as Velvet Fine Art Paper and UltraSmooth Fine Art Paper. You can also use this feed slot for other types of paper, as listed on page 39.

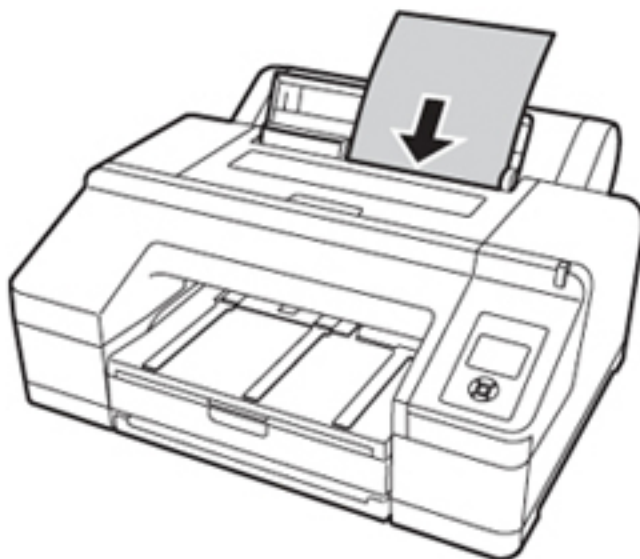
1. Make sure the printer is turned on, then press the ◀ Paper Source button until the  sheet icon appears on the LCD screen.
2. Extend the paper support.



3. Adjust the edge guide according to the paper width.



4. Align the sheet with the right edge of the slot and insert it until it meets resistance. Make sure the sheet is straight.



5. Press the ▼ button to feed the paper.

EPSON P5000

LCD TOUCH SCREEN CHECKLIST

Before you send your print job, check the LCD on the printer to make sure the settings are correct for media.



1. You want to make sure that the printer is set for to the correct media, whether “Cut Sheet” or “Roll Paper.” 95% of the time, people print on cut sheet.
2. Make sure the correct ink is chosen for the paper type you’re using. For most photo surface papers, such as luster or glossy, use Photo Black (PK). For matte surface papers, use Matte Black (MK). **THERE IS NO NEED TO SWITCH BLACK INK IF THE CORRECT INK IS ALREADY SELECTED.** To switch black ink, press the black ink button, press “Proceed,” and allow the printer a few minutes to switch inks.

Cut-sheet size - 8.5” x 11” up to 17” x 24”

Roll media size - Single roll up to 17” width

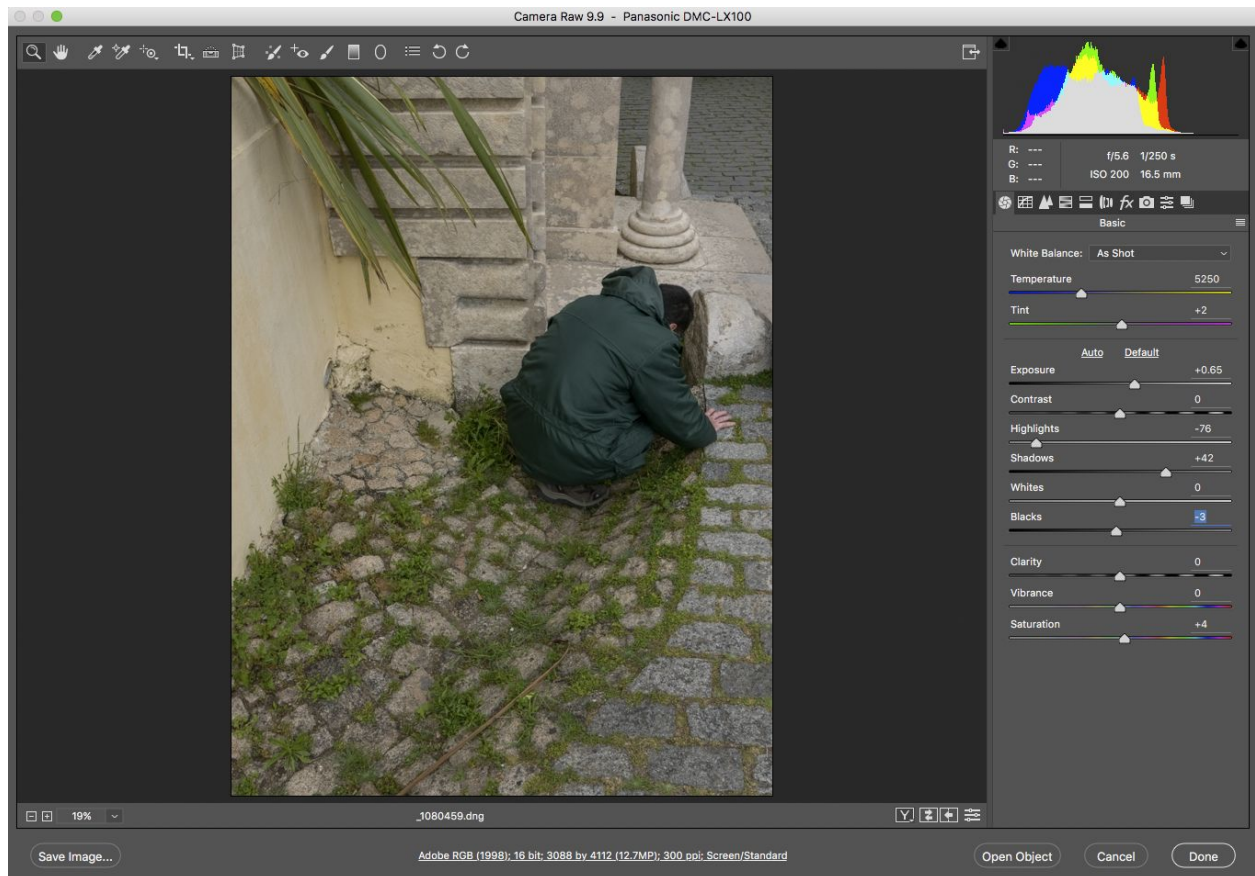
Minimum border is 1/4”, full bleed printing is optional if you are printing from roll paper

Preparing your file-

It's important to properly set your camera to maximize print quality.
Always shoot using RAW file mode and set the color space Adobe RGB 1998.

Make adjustments to your file in Camera Raw, which is accessible through Adobe Bridge. -This allows you to save your changes and return back to the original unedited file.

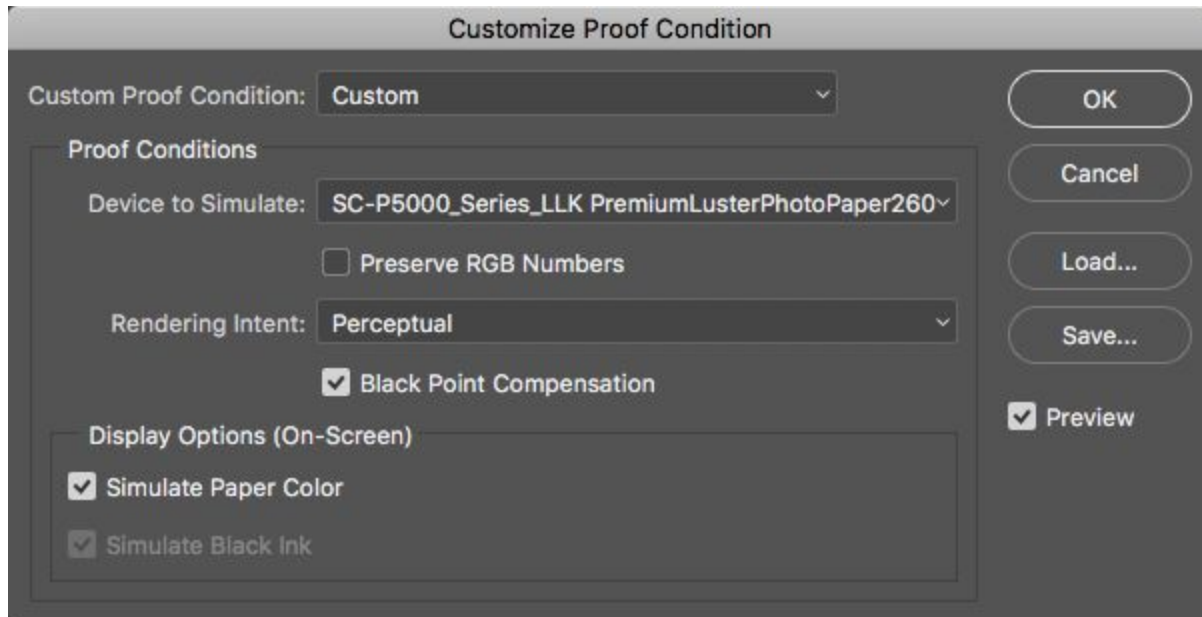
Be sure to save a copy of your file once you begin editing in Photoshop, otherwise you will overwrite the original file.



When you are finished, *Open* the file in Photoshop.

Soft Proofing- (Optional Step)

To see an on-screen preview of your image with a specific paper type/printer.
Choose *View, Proof Setup, Custom*



Custom Proof Condition: Custom

-Device to Simulate: Choose the correct printer and paper profile.

For example, using the Epson Stylus P5000 and Epson Luster Paper you would select:
'SC-P5000_Series_LLK_PremiumLusterPhotoPaper260'

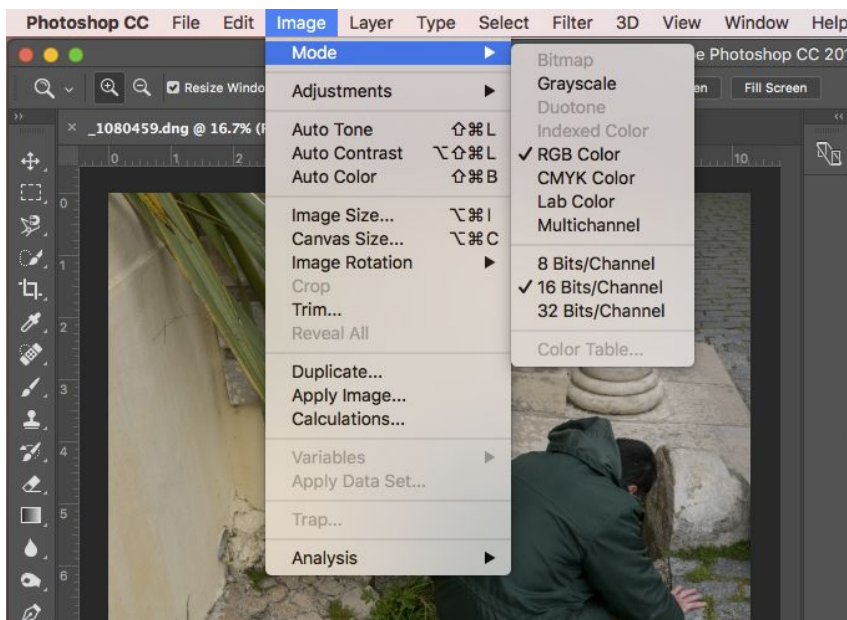
Rendering Intent: Choose *Perceptual* or *Relative Colormetric*. Be sure to choose the same setting on the printer driver (Next Page).

- Choose *Black Point Compensation, Simulate Paper Color and Simulate Black Ink*

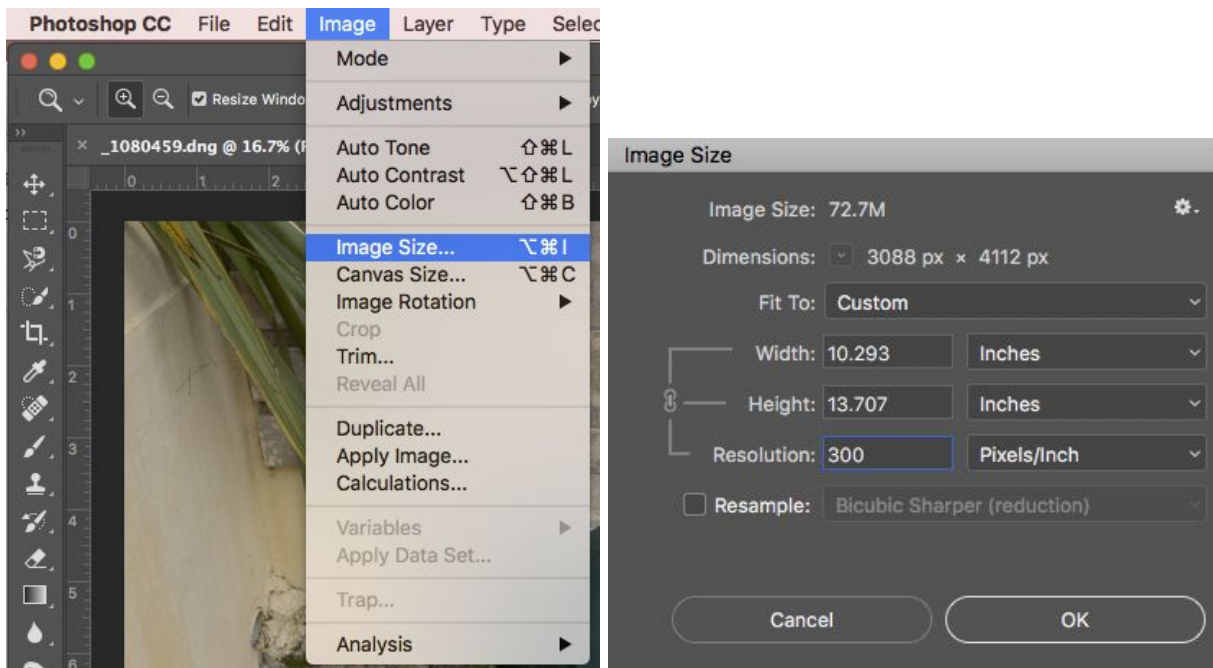
Check preview to see how the image will look on the particular paper type you are proofing for.
(shortcut, "Command Y")

If you notice a substantial tone/color shift after soft proofing you can use an adjustment layer to compensate for the shift. REMEMBER TO SAVE A COPY OF YOUR FILE, DON'T SAVE OVER THE ORIGINAL!!

1. Choose *Image, Mode* and confirm that your file is set to RGB Color and 16 Bit/Channel.



2. Select *Image, Image Size* to set the desired output size. If you uncheck *Resample Image*, the printing resolution will change but the number of pixels representing the image in width and height will stay the same. Ideally you want the resolution to be somewhere between 240-360 *DPI*.



-If the Document Size is smaller or larger than desired, check *Resample* , select the appropriate option in the drop down menu and change your height and width.

3. Now your image is sized, ready to print.

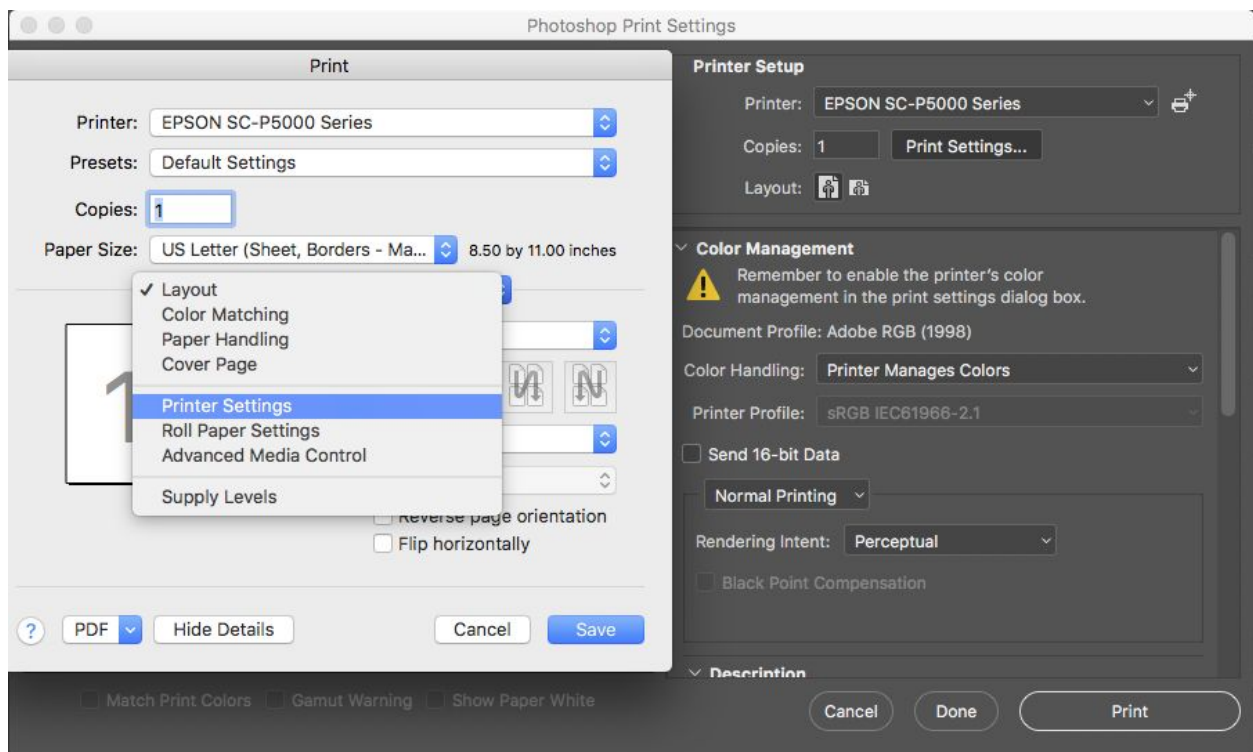
File, Print

Printer: *Epson SC-P5000 Series*

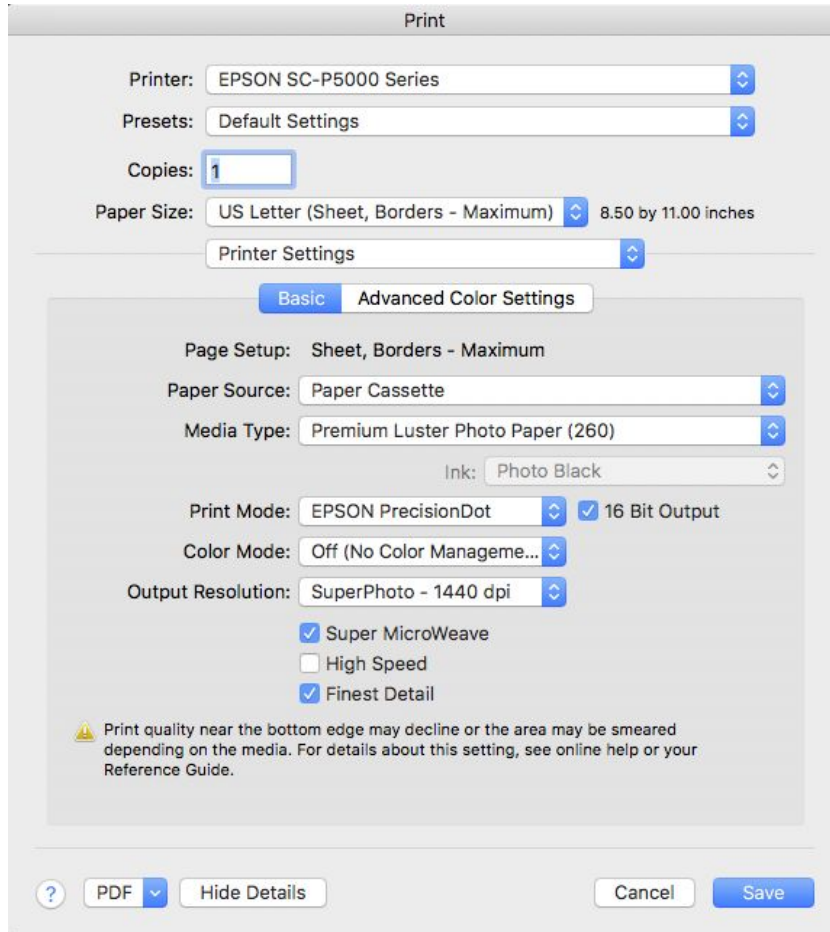
Choose *Print Settings*

Paper Size, choose your paper size

* Be sure to choose (Sheet, Borders - Maximum), within the paper size option. This will center the image on your paper. The default paper setting is *Roll Paper*. If you choose the wrong paper type, you will get a printer error. If this occurs, delete the job on the printer and resend the job.



Choose *Printer Settings*, again



Under *Basic* Options

Page Setup: *Sheet, Borders- Maximum*

Paper Source: This is dependant on what paper type you are using. Most photo surface papers such as Luster, Glossy, Matte and Semi Matte are loaded in the *Paper Cassette*. Thicker media such as Hahnemuhle Photo Rag or Epson Hot Press papers are loaded using the *Manual Feed*. Check your paper box for loading instructions.

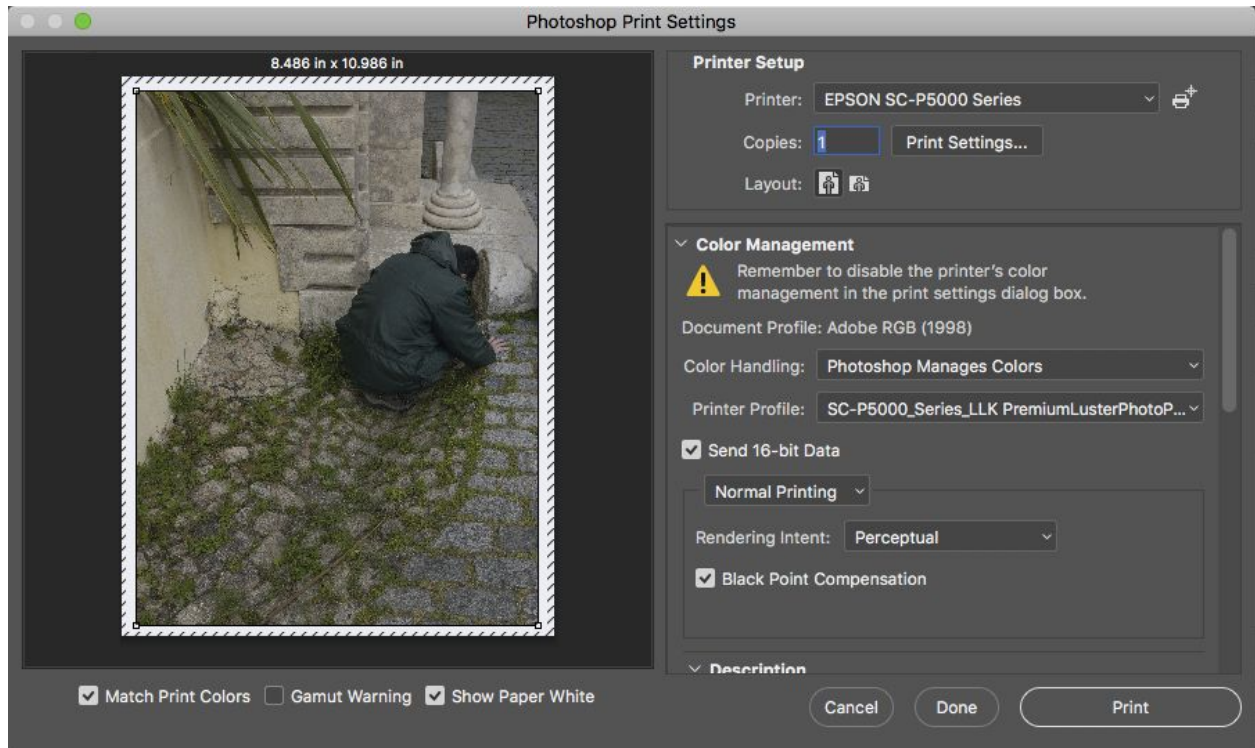
Paper Type: Choose the paper type you are printing on. If the paper option you want to print on is greyed out, you will need to choose a different *Paper Source*.

Print Mode: *Epson PrecisionDot, 16 Bit Output*

*Color Mode: Off (No Color Management)- Important setting needed to choose a specific paper profile.

Output Resolution: *SuperPhoto - 1440 dpi*
Choose *Super MicroWeave* and *Finest Detail*.

Save



At this point you should see a preview of how your image will be orientated on your paper. If the file is a horizontal format, click on the *Layout* icon to rotate your image.

Color Management -

Color Handling: *Photoshop Manages Colors*

Printer Profile: Choose the paper profile that is consistent with your paper type.
For example, printing on Epson Luster Photo Paper



Choose, *Send 16-bit Data*, *Match Print Colors*, *Black Point Compensation* and *Show Paper White*.

Normal Printing

Rendering Intent: *Choose Perceptual or Relative Colormetric*. If you did any Soft Proofing (optional step on Pg 4), choose whatever setting you proofed with.

PRINT